

Genomic RNA from Kilbourne F110: A/equine/Prague/1/56 (HA) x A/Aichi/2/68 (NA) x A/Puerto Rico/8/34 (H7N2), Reassortant X-33, NA Deficient

Catalog No. NR-10082

Product Description: Genomic RNA was isolated from a preparation of pooled allantoic fluid from specific-pathogen free (SPF) embryonated chicken eggs¹ infected with reassortant influenza A virus, A/equine/Prague/1/56 (HA) x A/Aichi/2/68 (NA) x A/Puerto Rico/8/34 (H7N2) (Kilbourne F110; X-33, NA deficient).

Lot²: 58406990

Manufacturing Date: 29JUL2009

TEST	SPECIFICATIONS	RESULTS
Sequencing of Influenza A Specific Region Matrix gene (868 nucleotides)	Influenza A virus Identical to BEI Resources NR-3620	Influenza A virus Identical to BEI Resources NR-3620
Total RNA Content by RiboGreen[®] Measurement (Viral, Cellular and Carrier)	Report results	12.5 ng per 100 µL
Functional Activity by RT-PCR Amplification^{3,4}	~ 1030 bp amplicon	~ 1030 bp amplicon (See Figure 1)
Virus Inactivation 10% of total yield incubated in SPF embryonated chicken eggs ¹ and evaluated by hemagglutination assay ⁵	No virus detected	No virus detected
Sodium Azide Content	Report results	0.0004%

¹10 to 11-day-old SPF Fertile Chicken Eggs acquired from B&E Eggs, York Springs, Pennsylvania

²Nucleic acid was extracted from a preparation of reassortant influenza A virus, A/equine/Prague/1/56 (HA) x A/Aichi/2/68 (NA) x A/Puerto Rico/8/34 (H7N2) (BEI Resources NR-3620; Lot 58253972) using a QIAamp[®] Viral RNA Mini kit (Qiagen 52906).

³Amplified using 1:10 dilution of NR-10082 and One-Step RT-PCR Kit (Qiagen 210212)

⁴The primers are described in Hoffmann, E., et al. "Universal Primer Set for the Full-Length Amplification of All Influenza A Viruses." *Arch. Virol.* 146 (2001): 2275-2289. PubMed: 11811679.

⁵This extraction procedure has been shown to consistently inactivate 100% of influenza viruses.

Date: 25 JAN 2011

Signature: *Dorothy C. Young*

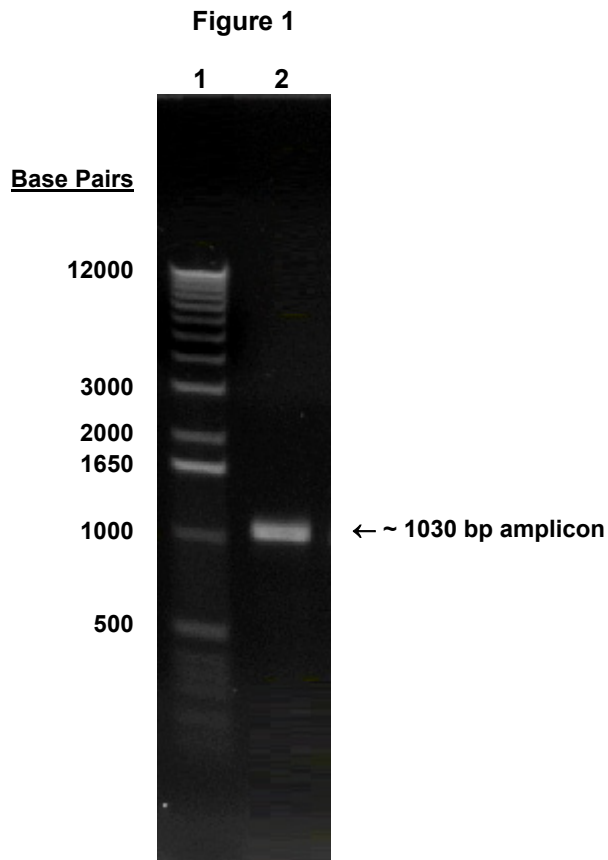
Title: Technical Manager, BEI Authentication or designee

ATCC[®], on behalf of BEI Resources, hereby represents and warrants that the material provided under this certificate has been subjected to the tests and procedures specified and that the results described, along with any other data provided in this certificate, are true and accurate to the best of ATCC[®]'s knowledge.

ATCC[®] is a trademark of the American Type Culture Collection.

You are authorized to use this product for research use only. It is not intended for human use.





Lane 1: Invitrogen™ TrackIt™ 1 Kb DNA Ladder
Lane 2: 10-fold dilution of NR-10082