

# Certificate of Analysis for HM-331

**Sporosarcina sp., Strain 2681**

**Catalog No. HM-331**

**Product Description:** *Sporosarcina* sp., strain 2681 was isolated from human blood.

**Lot<sup>1</sup>: 59539213**

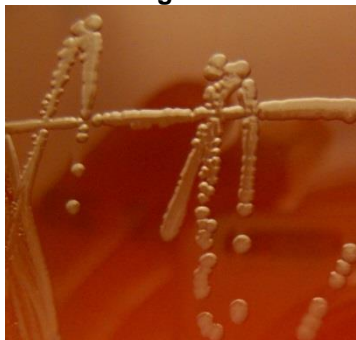
**Manufacturing Date: 12NOV2010**

TEST	SPECIFICATIONS	RESULTS
<b>Phenotypic Analysis</b> Cellular morphology Colony morphology <sup>2</sup>  Analytical profile index (API <sup>®</sup> 20 E)	Gram-positive rod Report results  Consistent with <i>Sporosarcina</i> sp.	Gram-positive rod Circular, convex, entire, glistening and gray (Figure 1) Consistent with <i>Sporosarcina</i> sp.
<b>Genotypic Analysis</b> Sequencing of 16S ribosomal RNA gene (~ 1420 base pairs)	≥ 99% identical to depositor's sequence Consistent with <i>Sporosarcina</i> sp.	≥ 99% identical to depositor's sequence Consistent with <i>Sporosarcina</i> sp.
<b>Viability (post-freeze)<sup>2</sup></b>	Growth	Growth

<sup>1</sup>*Sporosarcina* sp., strain 2681 was deposited by Dr. Kimberlee A. Musser, Chief, Bacterial Diseases, Division of Infectious Diseases, Wadsworth Center, New York State Department of Health, Albany, New York. The deposited material was inoculated into Tryptic Soy Broth and incubated for 48 hours at 37°C in an aerobic atmosphere. Broth inoculum was added to Kolles which were grown 48 hours at 37°C to produce this lot.

<sup>2</sup>48 hours at 37°C and aerobic atmosphere on Tryptic Soy Agar with 5% sheep blood

**Figure 1**



**Date:** 08 MAR 2011

**Signature:**

**Title:**

Technical Manager, BEI Authentication or designee

ATCC<sup>®</sup>, on behalf of BEI Resources, hereby represents and warrants that the material provided under this certificate has been subjected by ATCC<sup>®</sup> to the tests and procedures specified and that the results described, along with any other data provided in this certificate, are true and accurate to the best of ATCC<sup>®</sup>'s knowledge.

ATCC<sup>®</sup> is a trademark of the American Type Culture Collection.

You are authorized to use this product for research use only. It is not intended for human use.

