

Staphylococcus aureus, Strain F340112
Catalog No. NR-13536
Product Description: *Staphylococcus aureus* (*S. aureus*), strain F340112 was isolated in August 2006 from a perineal abscess from a Stanford Hospital patient in Palo Alto, California, U.S.A.

Lot¹: 59982800
Manufacturing Date: 18MAY2011

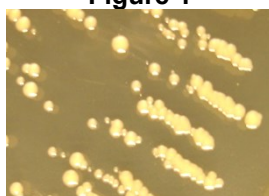
TEST	SPECIFICATIONS	RESULTS
Phenotypic Analysis Cellular morphology Colony morphology ² Oxacillin resistance ³ β-Hemolysis on blood agar Analytical profile index (API Staph [®]) ⁴ Catalase	Gram-positive cocci Report results Resistant Report results Consistent with <i>S. aureus</i> Positive	Gram-positive cocci Circular, peaked, entire and cream (Figure 1) Resistant Positive Consistent with <i>S. aureus</i> Positive
Genotypic Analysis Sequencing of 16S ribosomal RNA gene (~ 1400 base pairs) Riboprinter [®] Microbial Characterization System	Consistent with <i>S. aureus</i> Consistent with <i>S. aureus</i>	Consistent with <i>S. aureus</i> Consistent with <i>S. aureus</i>
Viability (post-freeze)²	Growth	Growth

¹*S. aureus*, strain F340112 was deposited by Kristien Mortelmans, Ph.D., Director, Microbiology Program, Biosciences Division, SRI International, Menlo Park, California. NR-13536 was produced by inoculation of the deposited material into Brain Heart Infusion Broth and grown 24 hours at 37°C. Broth inoculum was added to Kolles which were grown 24 hours at 37°C to produce this lot.

²24 hours at 37°C and aerobic atmosphere on Brain Heart Infusion Agar

³24 hours at 37°C and aerobic atmosphere on Mueller Hinton Agar containing 6 µg/mL Oxacillin and 4% NaCl (Oxacillin Screen Agar BBL™ 221952)

⁴The API Staph[®] identification includes a test for Lysostaphin resistance that was not completed for NR-13536. NR-13536 is identified as *S. aureus* by the API Staph[®] test regardless of the Lysostaphin resistance test results.

Figure 1

Date: 08 SEP 2011

Signature:
Title:

Technical Manager, BEI Authentication or designee

 ATCC[®], on behalf of BEI Resources, hereby represents and warrants that the material provided under this certificate has been subjected to the tests and procedures specified and that the results described, along with any other data provided in this certificate, are true and accurate to the best of ATCC[®]'s knowledge.

 ATCC[®] is a trademark of the American Type Culture Collection.

You are authorized to use this product for research use only. It is not intended for human use.

