

Certificate of Analysis for HM-138D

Genomic DNA from *Prevotella amnii*, Strain CRIS 21A-A

Catalog No. HM-138D

Product Description: Genomic DNA was obtained from a preparation of *Prevotella amnii* (*P. amnii*), strain CRIS 21A-A.

Lot^{1,2}: 59882063

Manufacturing Date: 23JUN2011

TEST	SPECIFICATIONS	RESULTS
Sequencing of 16S Ribosomal RNA Gene (1025 base pairs)	≥ 99% identical to ADFQ01000002.1 <i>P. amnii</i> , strain CRIS 21A-A	≥ 99% identical to ADFQ01000002.1 <i>P. amnii</i> , strain CRIS 21A-A
Agarose Gel Electrophoresis	High molecular weight chromosomal DNA	High molecular weight chromosomal DNA (Figure 1)
Concentration by PicoGreen[®] Measurement	0.7 to 1.5 µg in 25 to 100 µL per vial	1.0 µg in 26 µL per vial (38 µg/mL)
Functional Activity by PCR Amplification 16S ribosomal RNA gene	~ 1500 bp amplicon	~ 1500 bp amplicon
OD₂₆₀/OD₂₈₀ Ratio	1.7 to 2.0	1.9
Bacterial Inactivation 10% of total yield plated on Tryptic Soy Agar with 5% defibrinated sheep blood ^{3,4}	No viable bacteria detected	No viable bacteria detected

¹Quality control of HMP organisms used for DNA extraction is only performed to demonstrate that the material produced by BEI Resources is identical to the deposited material. It should not be considered a complete characterization of the deposited organism.

²The bacterial preparation used for extraction of genomic DNA was produced by inoculation of the deposited material onto Tryptic Soy Agar (TSA) with 5% defibrinated sheep blood and incubation for 48 hours at 37°C in an anaerobic atmosphere (80% N₂:10% CO₂:10% H₂). This material was passaged on a TSA with 5% defibrinated sheep blood slant and incubated for 96 hours at 37°C in an anaerobic atmosphere. The material from the second growth was added to Kolles. After incubation for 48 hours at 37°C in an anaerobic atmosphere, genomic DNA was extracted using proprietary technology.

³7 days at 37°C in an anaerobic atmosphere

⁴An extraction procedure was used that has been shown to consistently inactivate 100% of Gram-positive and Gram-negative bacteria.

Date: 20 DEC 2011

Signature:



Title:

Technical Manager, BEI Authentication or designee

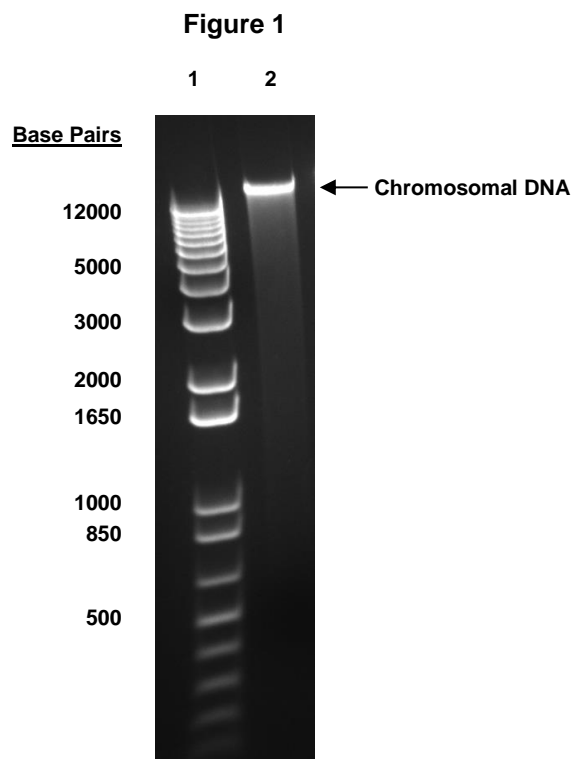
ATCC[®], on behalf of BEI Resources, hereby represents and warrants that the material provided under this certificate has been subjected to the tests and procedures specified and that the results described, along with any other data provided in this certificate, are true and accurate to the best of ATCC[®]'s knowledge.

ATCC[®] is a trademark of the American Type Culture Collection.

You are authorized to use this product for research use only. It is not intended for human use.



Certificate of Analysis for HM-138D



Lane 1: Invitrogen™ TrackIt 1 Kb Plus DNA Ladder™
Lane 2: 200 ng of HM-138D