

Certificate of Analysis for HM-412D

Genomic DNA from *Bifidobacterium breve*, Strain EX336960VC19

Catalog No. HM-412D

Product Description: Genomic DNA was obtained from a preparation of *Bifidobacterium breve* (*B. breve*), strain EX336960VC19.

Lot^{1,2}: 60339467

Manufacturing Date: 02NOV2011

TEST	SPECIFICATIONS	RESULTS
Sequencing of 16S Ribosomal RNA Gene (~ 1330 base pairs)	Consistent with <i>B. breve</i>	Consistent with <i>B. breve</i> ³
Agarose Gel Electrophoresis	High molecular weight chromosomal DNA	High molecular weight chromosomal DNA (Figure 1)
Concentration by PicoGreen® Measurement	0.7 to 1.5 µg in 25 to 100 µL per vial	1.0 µg in 51 µL per vial (19 µg/mL)
Functional Activity by PCR Amplification 16S ribosomal RNA gene	~ 1500 bp amplicon	~ 1500 bp amplicon
OD ₂₆₀ /OD ₂₈₀ Ratio	1.7 to 2.0	1.9
Bacterial Inactivation 10% of total yield plated on Tryptic Soy Agar with 5% defibrinated sheep blood ^{4,5}	No viable bacteria detected	No viable bacteria detected

¹Quality control of HMP organisms used for DNA extraction is only performed to demonstrate that the material produced by BEI Resources is identical to the deposited material. It should not be considered a complete characterization of the deposited organism.

²The bacterial preparation used for extraction of genomic DNA was produced by Modified Chopped Meat Medium culture of BEI Resources HM-412 (Lot 59994679). After incubation for 24 hours at 37°C and anaerobic atmosphere (80% N₂:10% CO₂:10% H₂), genomic DNA was extracted using proprietary technology.

³The sequence obtained for HM-412D could only be compared with published sequences. The whole genome sequence for *B. breve*, strain EX336960VC19 is currently unavailable.

⁴7 days at 37°C and anaerobic atmosphere

⁵An extraction procedure was used that has been shown to consistently inactivate 100% of Gram-positive and Gram-negative bacteria.

Date: 13 FEB 2012

Signature:



Title:

Technical Manager, BEI Authentication or designee

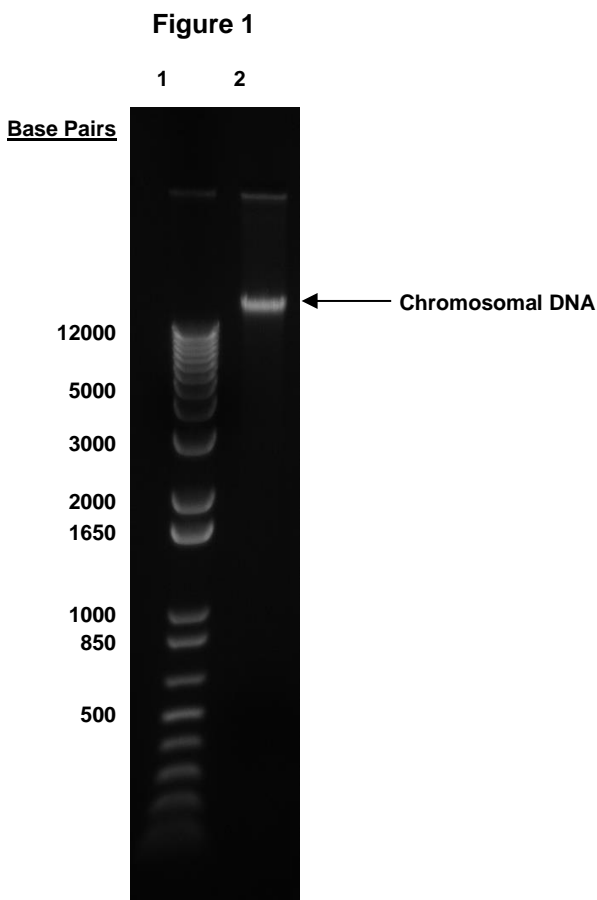
ATCC®, on behalf of BEI Resources, hereby represents and warrants that the material provided under this certificate has been subjected by ATCC® to the tests and procedures specified and that the results described, along with any other data provided in this certificate, are true and accurate to the best of ATCC®'s knowledge.

ATCC® is a trademark of the American Type Culture Collection.

You are authorized to use this product for research use only. It is not intended for human use.



Certificate of Analysis for HM-412D



Lane 1: 200 ng of HM-412D

Lane 2: Invitrogen™ TrackIt 1 Kb Plus DNA Ladder™