

Certificate of Analysis for HM-157

***Lachnospiraceae* sp., Strain 5_1_57FAA**

Catalog No. HM-157

Product Description: *Lachnospiraceae* sp., strain 5_1_57FAA was obtained from inflamed biopsy tissue taken from the terminal ileum of a 22-year-old female patient with Crohn's disease.

Lot^{1,2}: 61119720

Manufacturing Date: 02AUG2012

TEST	SPECIFICATIONS	RESULTS
Phenotypic Analysis Cellular morphology ³ Colony morphology ⁴	Report results Report results	Gram-variable rod Pinpoint and grey (Figure 1)
Genotypic Analysis Sequencing of 16S ribosomal RNA gene (~ 1480 base pairs)	≥ 99% identical to GenBank: ACTR01000020 (<i>Lachnospiraceae</i> sp., strain 5_1_57FAA)	≥ 99% identical to GenBank: ACTR01000020 (<i>Lachnospiraceae</i> sp., strain 5_1_57FAA)
Viability (post-freeze)⁴	Growth	Growth

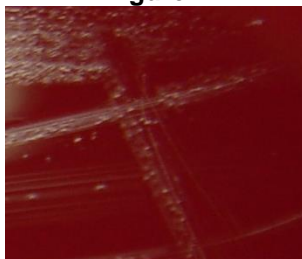
¹Quality control of HMP material is only performed to demonstrate that the material distributed by BEI Resources is identical to the deposited material. It should not be considered a complete characterization of the deposited organism.

²*Lachnospiraceae* sp., strain 5_1_57FAA was deposited by Professor Emma Allen-Vercoe, Department of Molecular and Cellular Biology, University of Guelph, Guelph, Ontario, Canada. The deposited material was inoculated into Modified Trypticase-Yeast Extract broth and incubated for 24 hours at 37°C in an anaerobic atmosphere (80% N₂:10% CO₂:10% H₂). The material from the initial growth was passaged once in Modified Trypticase-Yeast Extract Broth for 24 hours at 37°C in an anaerobic atmosphere to produce this lot.

³*Lachnospiraceae* species have a Gram-positive cell wall but strains have been reported to stain Gram-variable or Gram-negative (Rainey, F. A. "Family V. *Lachnospiraceae* fam. nov." *Bergey's Manual of Systematic Bacteriology*. Vol 3. 2nd Ed. New York: Springer, 2009. 921).

⁴24 hours at 37°C in an anaerobic atmosphere on Tryptic Soy Agar with 5% defibrinated sheep blood

Figure 1



Date: 11 MAR 2013

Signature:

Title:

Technical Manager, BEI Authentication or designee

ATCC®, on behalf of BEI Resources, hereby represents and warrants that the material provided under this certificate has been subjected to the tests and procedures specified and that the results described, along with any other data provided in this certificate, are true and accurate to the best of ATCC®'s knowledge.

ATCC® is a trademark of the American Type Culture Collection.

You are authorized to use this product for research use only. It is not intended for human use.

