

# Certificate of Analysis for NR-20744

***Salmonella enterica* subsp. *enterica*, Strain MDCH10 (Seroovar Tennessee)**

**Catalog No. NR-20744**

**Product Description:** *Salmonella enterica* (*S. enterica*) subsp. *enterica* serovar Tennessee, strain MDCH10 was isolated in 2007 from the stool of a 7-year-old male patient in Michigan, USA.

**Lot<sup>1</sup>: 61331520**

**Manufacturing Date: 14NOV2012**

TEST	SPECIFICATIONS	RESULTS
<b>Phenotypic Analysis</b> Cellular morphology Colony morphologies <sup>2,3</sup>  Analytical profile index (API® 20 E) <sup>4</sup> Vitek® Gram-negative identification card (GN)	Report results Report results  Consistent with <i>Salmonella</i> spp. Report results	Gram-negative rods Colony type 1: Circular, low convex, entire and gray (Figure 1) Colony type 2: Irregular, spreading, flat, entire and gray (Figure 2) Consistent with <i>Salmonella</i> spp. Consistent with <i>S. enterica</i> subsp. <i>enterica</i>
<b>Genotypic Analysis</b> Sequencing of 16S ribosomal RNA gene (~ 1470 base pairs)	Consistent with <i>S. enterica</i>	Consistent with <i>S. enterica</i> subsp. <i>enterica</i>
<b>Serogroup Analysis</b>	Report results	Serogroup C <sub>1</sub> <sup>5</sup>
<b>Viability (post-freeze)<sup>2</sup></b>	Growth	Growth

<sup>1</sup>The deposited material was inoculated into Tryptic Soy Broth and incubated for 24 hours at 37°C in an aerobic atmosphere. Broth inoculum was added to Kolles, which were incubated for 24 hours at 37°C in an aerobic atmosphere to produce this lot.

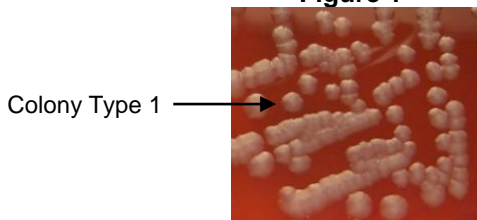
<sup>2</sup>24 hours at 37°C in an aerobic atmosphere on Tryptic Soy Agar with 5% sheep blood

<sup>3</sup>Two colony types were observed. Plating of the individual colony types showed that they did not revert back to the mixed colony type. The 16S ribosomal RNA gene of each colony type was sequenced and found to be consistent with *S. enterica* subsp. *enterica*.

<sup>4</sup>Additional serological tests are required to determine *Salmonella* species using API® 20 E

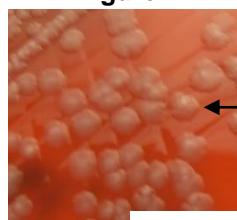
<sup>5</sup>Serogroup C<sub>1</sub> contains serovar Tennessee in addition to other serovars

**Figure 1**



Colony Type 1 →

**Figure 2**



← Colony Type 2

**Date:** 08 MAY 2013

**Signature:**

**Title:** Technical Manager, BEI Authentication or designee

ATCC®, on behalf of BEI Resources, hereby represents and warrants that the material provided under this certificate has been subjected to the tests and procedures specified and that the results described, along with any other data provided in this certificate, are true and accurate to the best of ATCC®'s knowledge.

ATCC® is a trademark of the American Type Culture Collection.

You are authorized to use this product for research use only. It is not intended for human use.



**BEI Resources**

[www.beiresources.org](http://www.beiresources.org)

E-mail: [contact@beiresources.org](mailto:contact@beiresources.org)

Tel: 800-359-7370

Fax: 703-365-2898