

Certificate of Analysis for NR-13452

Monoclonal Anti-Influenza Virus H1 Hemagglutinin (HA), A/South Carolina/1/1918 (H1N1), Clone 6B9 (produced *in vitro*)

Catalog No. NR-13452

Product Description: Antibody Class: IgG2ak

Mouse monoclonal antibody prepared against the H1 hemagglutinin of influenza virus, A/South Carolina/1/1918 (H1N1) was purified from clone 6B9 hybridoma supernatant by protein G affinity chromatography.

Lot: 60212350

Manufacturing Date: 28DEC2011

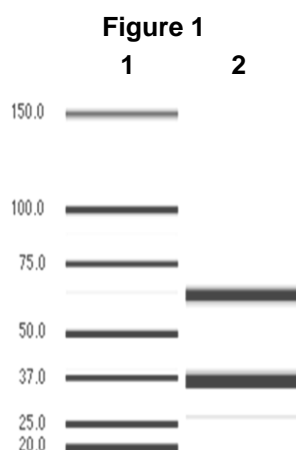
TEST	SPECIFICATIONS	RESULTS
Antibody Class Determination	Report results	IgG2ak
Experion Pro260 Analysis	Correct molecular weight (MW) for heavy and light chains Report results	Correct MW for heavy and light chains (Figure 1) 100% pure
Concentration by Spectrophotometer at OD ₂₈₀	Report results	1.4 mg per mL
Functional Activity ¹ ELISA ² Hemagglutination inhibition assay ³ Western blot assay ⁴	Report results Report results Report results	Reactive Reactive Reactive
Sterility	0.22 µm filter-sterilized	0.22 µm filter-sterilized

¹Testing performed by contributor

²Using baculovirus-expressed recombinant H1 HA from influenza virus, A/South Carolina/1/1918 (H1N1)

³Using 1918 HA(SC)/NA virus-like particles, which are described in Yu, X., et al., "Neutralizing Antibodies Derived from the B cells of 1918 Influenza Pandemic Survivors." *Nature* 455 (2008): 532-536. PubMed: 18716625.

⁴Using baculovirus-expressed recombinant HA from influenza virus, A/South Carolina/1/1918 (H1N1) and from influenza virus, A/California/04/2009 (H1N1)pdm09, under reducing and denaturing conditions



Lane 1: MW Markers (kDa)
Lane 2: NR-13452

Certificate of Analysis for NR-13452

Date: 15 NOV 2013

Signature: *Michael R. Gypke*

Title: Technical Manager, BEI Authentication or designee

ATCC®, on behalf of BEI Resources, hereby represents and warrants that the material provided under this certificate has been subjected by ATCC® and the contributor to the tests and procedures specified and that the results described, along with any other data provided in this certificate, are true and accurate to the best of ATCC®'s knowledge.

ATCC® is a trademark of the American Type Culture Collection.

You are authorized to use this product for research use only. It is not intended for human use.

