

Genomic DNA from *Escherichia coli*, Strain CoGen001848

Catalog No. NR-4634

Product Description: Genomic DNA was isolated from a preparation of *Escherichia coli* (*E. coli*), strain CoGen001848, serotype O157:H7. Enterohemorrhagic *E. coli* (EHEC), strain CoGen001848 is an isolate from Illinois that was obtained during the 2006 California spinach outbreak.

Lot¹: 58580372

Manufacturing Date: 13APR2009

TEST	SPECIFICATIONS	RESULTS
Sequencing of 16S Ribosomal RNA Gene (~ 1380 base pairs)	Consistent with <i>E. coli</i>	Consistent with <i>E. coli</i>
Agarose Gel Electrophoresis	High molecular weight chromosomal DNA	High molecular weight chromosomal DNA (Figure 1)
Concentration by PicoGreen[®] Measurement	4 to 6 µg in 25 to 100 µL per vial	9 µg in 30 µL per vial (290 µg/mL) ²
Functional Activity by PCR Amplification 16S ribosomal RNA gene	~ 1500 base pair amplicon	~ 1500 base pair amplicon
OD₂₆₀/OD₂₈₀ Ratio	1.7 to 1.9	1.9
Bacterial Inactivation 10% of total yield plated on Tryptic Soy agar ^{3,4}	No viable bacteria detected	No viable bacteria detected

¹NR-4634 was produced from the deposited material. Genomic DNA was extracted using proprietary technology.

²The amount of genomic DNA per vial of NR-4634 lot 58580372 exceeds the acceptance criteria.

³7 days at 37°C in an aerobic atmosphere

⁴An extraction procedure was used that has been shown to consistently inactivate 100% of Gram-positive and Gram-negative bacteria.

Date: 24 SEP 2014

Signature:



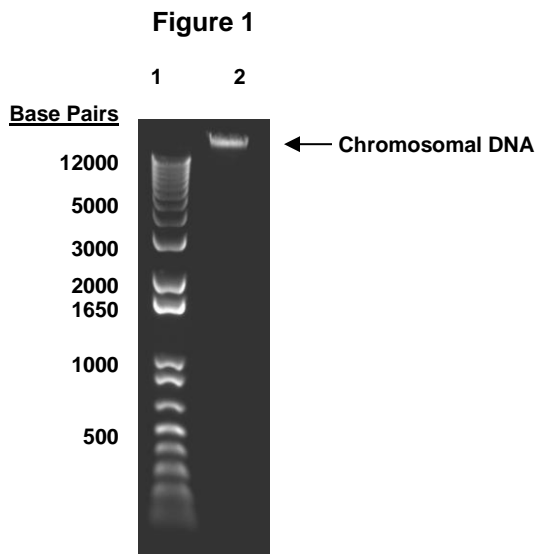
Title: Technical Manager, BEI Authentication or designee

ATCC[®], on behalf of BEI Resources, hereby represents and warrants that the material provided under this certificate has been subjected to the tests and procedures specified and that the results described, along with any other data provided in this certificate, are true and accurate to the best of ATCC[®]'s knowledge.

ATCC[®] is a trademark of the American Type Culture Collection.

You are authorized to use this product for research use only. It is not intended for human use.





Lane 1: Invitrogen™ TrackIt™ 1 Kb Plus DNA Ladder

Lane 2: 200 ng of NR-4634