

Certificate of Analysis for NR-44350

***Klebsiella pneumoniae*, Strain DMC0526**

Catalog No. NR-44350

Product Description: *Klebsiella pneumoniae* (*K. pneumoniae*), strain DMC0526 was isolated in 2010 from blood of a patient with sepsis in Detroit, Michigan, USA.

Lot¹: 62849231

Manufacturing Date: 20AUG2014

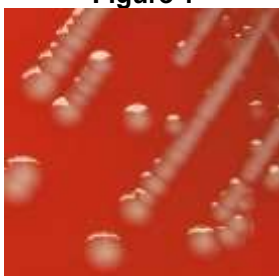
TEST	SPECIFICATIONS	RESULTS
Phenotypic Analysis Cellular morphology Colony morphology ² Motility (wet mount) VITEK [®] MS (MALDI-TOF)	Gram-negative bacilli Report results Report results Consistent with <i>K. pneumoniae</i>	Gram-negative bacilli Circular, convex, entire, smooth, mucoid and gray (Figure 1) Non-motile Consistent with <i>K. pneumoniae</i>
Genotypic Analysis Sequencing of 16S ribosomal RNA gene (~ 900 base pairs) Riboprinter [®] Microbial Characterization System	Consistent with <i>K. pneumoniae</i> Consistent with <i>K. pneumoniae</i>	Consistent with <i>K. pneumoniae</i> Consistent with <i>K. pneumoniae</i>
Purity (post-freeze)³	Consistent with <i>K. pneumoniae</i>	Consistent with <i>K. pneumoniae</i>
Viability (post-freeze)²	Growth	Growth

¹*K. pneumoniae*, strain DMC0526 was deposited by Robert A. Bonomo, M.D., Chief of Medical Services, Louis Stokes Cleveland VA Medical Center, Cleveland, Ohio, USA. NR-44350 was produced by inoculation of the deposited material into Tryptic Soy broth and incubated for 24 hours at 37°C in an aerobic atmosphere. Broth inoculum was added to Tryptic Soy agar with 5% defibrinated sheep blood kolles which were grown 24 hours at 37°C in an aerobic atmosphere to produce this lot.

²24 hours at 37°C in an aerobic atmosphere on Tryptic Soy agar with 5% defibrinated sheep blood

³Purity of this lot was assessed for 7 days at 37°C in an aerobic atmosphere on Tryptic Soy agar with 5% defibrinated sheep blood.

Figure 1



Date: 11 DEC 2014

Signature:

Title:

Technical Manager, BEI Authentication or designee

ATCC[®], on behalf of BEI Resources, hereby represents and warrants that the material provided under this certificate has been subjected to the tests and procedures specified and that the results described, along with any other data provided in this certificate, are true and accurate to the best of ATCC[®]'s knowledge.

ATCC[®] is a trademark of the American Type Culture Collection.

You are authorized to use this product for research use only. It is not intended for human use.

