

Enterococcus faecium, Strain E1578
Catalog No. NR-31933
Product Description: *Enterococcus faecium* (*E. faecium*), strain E1578 was isolated in 2001 from the feces of a miniature pig in Germany.

Lot¹: 64220041
Manufacturing Date: 18MAY2016

TEST	SPECIFICATIONS	RESULTS
Phenotypic Analysis² Cellular morphology Colony morphology ³ Motility (wet mount) VITEK [®] MS (MALDI-TOF)	Gram-positive cocci Report results Report results <i>E. faecium</i>	Gram-positive cocci Circular, low convex, entire, smooth and white (Figure 1) Non-motile <i>E. faecium</i> (99.9%)
Genotypic Analysis Sequencing of 16S ribosomal RNA gene (~ 1500 base pairs)	≥ 99% sequence identity to <i>E. faecium</i> , strain E1552 (GenBank: AHWW01000010.1)	99.9% sequence identity to <i>E. faecium</i> , strain E1552 (GenBank: AHWW01000010.1) ⁴
Purity (post-freeze)⁵	Growth consistent with expected colony morphology	Growth consistent with expected colony morphology
Viability (post-freeze)²	Growth	Growth

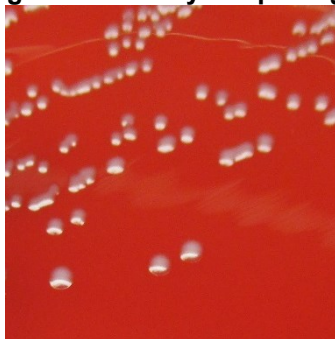
¹NR-31933 was produced by inoculation of the deposited material into Tryptic Soy broth and incubated for 1 day at 37°C in an aerobic atmosphere. Broth inoculum was added to Tryptic Soy agar with 5% defibrinated sheep blood kolles, which were grown for 1 day at 37°C in an aerobic atmosphere to produce this lot.

²*Enterococcus* species are differentiated from *Streptococcus* species through hemolytic activity. This item was not tested for hemolytic activity as the 16S sequence and VITEK[®] MS (MALDI-TOF) results clearly identified the organism as *Enterococcus*.

³1 day at 37°C in an aerobic atmosphere on Tryptic Soy agar with 5% defibrinated sheep blood.

⁴Also consistent with other *Enterococcus* species

⁵Purity of this lot was assessed for 8 days at 37°C in an aerobic atmosphere on Tryptic Soy agar with 5% defibrinated sheep blood.

Figure 1: Colony Morphology

Date: 06 JUL 2016

Signature:

BEI Resources Authentication

ATCC[®], on behalf of BEI Resources, hereby represents and warrants that the material provided under this certificate has been subjected to the tests and procedures specified and that the results described, along with any other data provided in this certificate, are true and accurate to the best of ATCC[®]'s knowledge.

ATCC[®] is a trademark of the American Type Culture Collection.

You are authorized to use this product for research use only. It is not intended for human use.


BEI Resources
www.beiresources.org

E-mail: contact@beiresources.org

Tel: 800-359-7370

Fax: 703-365-2898