

## Genomic DNA from *Escherichia coli*, Strain E 10

**Catalog No. NR-3053**

**Product Description:** Genomic DNA was isolated from a preparation of *Escherichia coli*, strain E 10, serotype O77:K96:NM.

**Lot<sup>1</sup>: 7642444**

**Manufacturing Date: 22SEP2006**

TEST	SPECIFICATIONS	RESULTS
Sequencing of 16S Ribosomal RNA Gene (~ 500 bp)	Consistent with <i>Escherichia coli</i>	Consistent with <i>Escherichia coli</i> <sup>2</sup>
Agarose Gel Electrophoresis	High molecular weight chromosomal DNA	High molecular weight chromosomal DNA (Figure 1)
Concentration by PicoGreen <sup>®</sup> Measurement	4 to 6 µg in 25 to 100 µL per vial	5.2 µg in 34 µL per vial (153 µg/mL)
Functional Activity by PCR Amplification 16S ribosomal RNA gene	~ 1500 bp amplicon	~ 1500 bp amplicon
OD <sub>260</sub> /OD <sub>280</sub> Ratio	1.7 to 1.9	1.8
Bacterial Inactivation 10% of total yield plated on Trypticase Soy Agar <sup>3,4</sup>	No viable bacteria detected	No viable bacteria detected

<sup>1</sup>The bacterial preparation used for extraction of genomic DNA was produced by inoculation of BEI Resources NR-103 (Lot: 3681288) onto Trypticase Soy Agar. After incubation for 24 hours at 37°C, genomic DNA was extracted using proprietary technology.

<sup>2</sup>Also consistent with *Shigella* species.

<sup>3</sup>7 days at 37°C in an aerobic atmosphere.

<sup>4</sup>An extraction procedure was used that has been shown to consistently inactivate 100% of Gram-negative bacteria.

**Date:** 06 NOV 2007

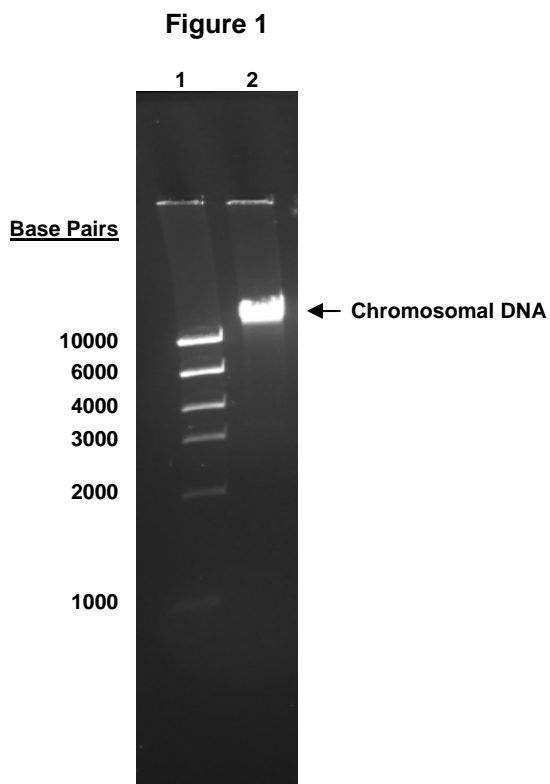
**Signature:** Signature on File

**Title:** Technical Manager, BEI Authentication or designee

ATCC<sup>®</sup>, on behalf of BEI Resources, hereby represents and warrants that the material provided under this certificate has been subjected to the tests and procedures specified and that the results described, along with any other data provided in this certificate, are true and accurate to the best of ATCC<sup>®</sup>'s knowledge.

ATCC<sup>®</sup> is a trademark of the American Type Culture Collection.

You are authorized to use this product for research use only. It is not intended for human use.



Lane 1: Invitrogen™ High DNA Mass™ Ladder  
Lane 2: 200 ng of NR-3053