

Genomic DNA from *Escherichia coli*, Strain EDL 931

Catalog No. NR-3041

Product Description: Genomic DNA was isolated from a preparation of enterohemorrhagic *Escherichia coli* (EHEC) strain EDL 931, serotype O157:H7.

Lot¹: 7559640

Manufacturing Date: 01AUG2006

TEST	SPECIFICATIONS	RESULTS
Sequencing of 16S Ribosomal RNA Gene (~ 450 bp)	Consistent with <i>Escherichia coli</i>	Consistent with <i>Escherichia coli</i> ²
Presence of Plasmid Confirmed by PCR Amplification pO157	Confirmed	Confirmed
Agarose Gel Electrophoresis	High molecular weight chromosomal DNA	High molecular weight chromosomal DNA (Figure 1)
Concentration by PicoGreen[®] Measurement	4 to 6 µg in 25 to 100 µL per vial	5.5 µg in 42 µL per vial (129 µg/mL)
Functional Activity by PCR Amplification 16S ribosomal RNA gene Gene-length DNA from pO157 (<i>hlyA</i> virulence marker) Virulence markers on chromosome ³ <i>stx1</i> <i>stx2</i> <i>eaeA</i>	~ 1500 bp amplicon ~ 3200 bp amplicon ~ 349 bp amplicon ~ 404 bp amplicon ~ 526 bp amplicon	~ 1500 bp amplicon ~ 3200 bp amplicon ~ 349 bp amplicon ~ 404 bp amplicon ~ 526 bp amplicon
OD₂₆₀/OD₂₈₀ Ratio	1.7 to 1.9	1.9
Bacterial Inactivation 10% of total yield plated on Tryptic Soy Agar ^{4,5}	No viable bacteria detected	No viable bacteria detected

¹The bacterial preparation used for extraction of genomic DNA was produced by inoculation of BEI Resources NR-3 (Lot: 3561328) onto Tryptic Soy Agar. After incubation for 27 hours at 37°C, genomic DNA was extracted using proprietary technology.

²Also consistent with *Shigella* species.

³Kimata, K., et al. "Rapid Categorization of Pathogenic *Escherichia coli* by Multiplex PCR." *Microbiol. Immunol.* 49 (2005): 485-492. PubMed: 15965295.

⁴7 days at 37°C in an aerobic atmosphere.

⁵An extraction procedure was used that has been shown to consistently inactivate 100% of Gram-negative bacteria.

Date: 10 June 2008

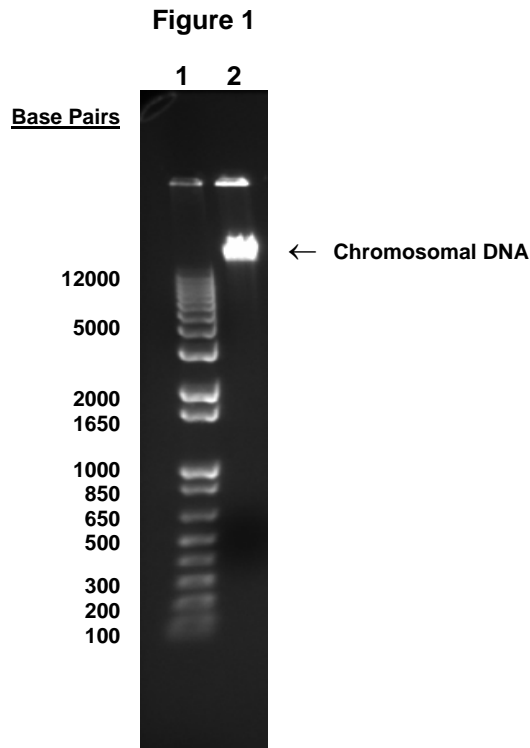
Signature: Signature on file

Title: Technical Manager, BEI Authentication or designee

ATCC[®], on behalf of BEI Resources, hereby represents and warrants that the material provided under this certificate has been subjected to the tests and procedures specified and that the results described, along with any other data provided in this certificate, are true and accurate to the best of ATCC[®]'s knowledge.

ATCC[®] is a trademark of the American Type Culture Collection.

You are authorized to use this product for research use only. It is not intended for human use.



Lane 1: Invitrogen™ 1Kb DNA Ladder™
Lane 2: 200 ng of NR-3041