

Genomic DNA from *Staphylococcus haemolyticus*, Strain DNF00585

Catalog No. HM-1164D

Product Description: Genomic DNA was extracted from a preparation of *Staphylococcus haemolyticus* (*S. haemolyticus*), strain DNF00585.

Lot^{1,2}: 70018048

Manufacturing Date: 20SEP2018

TEST	SPECIFICATIONS	RESULTS
Genotypic Analysis Sequencing of 16S ribosomal RNA gene (~ 1460 base pairs)	≥ 99% sequence identity to <i>S. haemolyticus</i> , strain DNF00585 (GenBank: JRNK01000047.1)	99.9% sequence identity to <i>S. haemolyticus</i> , strain DNF00585 (GenBank: JRNK01000047.1) ³
Agarose Gel Electrophoresis	High molecular weight chromosomal DNA	High molecular weight chromosomal DNA (Figure 1)
Concentration by PicoGreen® Measurement	0.7 to 1.5 µg in 25 to 100 µL per vial	1.1 µg in 28 µL per vial (38 µg/mL)
Amount per vial	0.7 to 1.5 µg	1.1 µg
Functional Activity by PCR Amplification 16S ribosomal RNA gene	~ 1500 base pair amplicon	~ 1500 base pair amplicon
OD₂₆₀/OD₂₈₀ Ratio	1.7 to 2.1	1.9
Bacterial Inactivation 10% of total yield plated on agar ^{4,5}	No viable bacteria detected	No viable bacteria detected

¹Quality control of HMP organisms used for DNA extraction is only performed to demonstrate that the material produced by BEI Resources is identical to the deposited material. It should not be considered a complete characterization of the deposited organism.

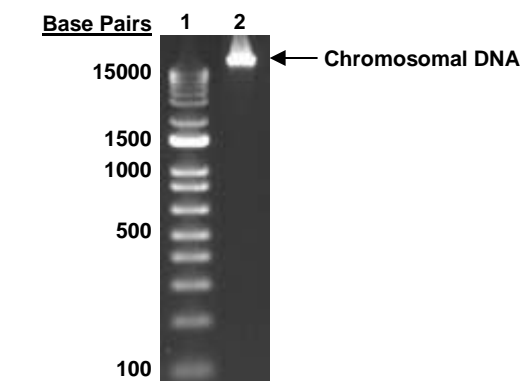
²The bacterial preparation used for extraction of genomic DNA was produced by culture of BEI Resources HM-1164 lot 64016392. Genomic DNA was extracted using proprietary technology.

³Also consistent with other *Staphylococcus* species

⁴14 days at 37°C in an aerobic atmosphere on Tryptic Soy agar

⁵An extraction procedure was used that has been shown to consistently inactivate 100% of Gram-positive and Gram-negative bacteria.

Figure 1: Agarose Gel Electrophoresis



Lane 1: Invitrogen™ TrackIt™ 1 Kb Plus DNA Ladder
Lane 2: 200 ng of HM-1164D

/Heather Couch/
Heather Couch

28 MAR 2019

Program Manager or designee, ATCC Federal Solutions

ATCC®, on behalf of BEI Resources, hereby represents and warrants that the material provided under this certificate has been subjected by ATCC® to the tests and procedures specified and that the results described, along with any other data provided in this certificate, are true and accurate to the best of ATCC®'s knowledge.

ATCC® is a trademark of the American Type Culture Collection.

You are authorized to use this product for research use only. It is not intended for human use.

