

**Trypanosoma cruzi, Strain Brazil (trypomastigote)**

**Catalog No. NR-55285**

**Product Description:**

*Trypanosoma cruzi* (*T. cruzi*), strain Brazil was isolated from a human patient in Brazil. Strain Brazil was deposited to BEI Resources as the trypomastigote stage of the parasite's life cycle. NR-55285 was produced by cultivation of BEI Resources seed lot 70043414 in human foreskin fibroblast cells (ATCC® CRL-1634™) with Dulbecco's Minimal Essential Medium (DMEM) supplemented with 10% heat-inactivated fetal bovine serum (HIFBS) for 4 days at 37°C in an aerobic atmosphere with 5% CO<sub>2</sub> until emergence of trypomastigotes from host cells was observed.

**Lot: 70071904**

**Manufacturing Date: 22OCT2024**

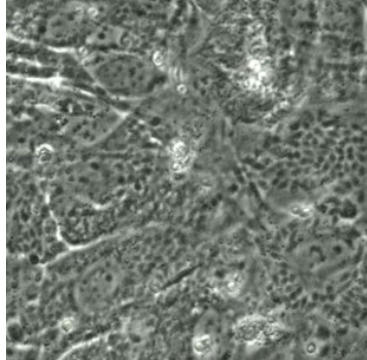
TEST	SPECIFICATIONS	RESULTS
<b>Cellular Morphology<sup>1</sup></b> 4 days at 37°C in an aerobic atmosphere with 5% CO <sub>2</sub> in DMEM supplemented with 10% HIFBS	Report results	Elongated, rounded-to-ovoid and motile; parasitophorous vacuoles visible (Figure 1)
<b>Genotypic Analysis<sup>2</sup></b> Sequencing of putative C-5 sterol desaturase gene ( <i>TcSC5D</i> ) (~ 730 base pairs)  Sequencing of putative <i>TcSC5D</i> (~ 780 base pairs)	≥ 99% sequence identity to <i>T. cruzi</i> Discrete Typing Unit (DTU) <i>T. cruzi</i> I (Tcl) (GenBank: JN050567.1)  ≥ 99% sequence identity to <i>T. cruzi</i> , Strain Brazil Clone A (GenBank: WNWZ01000401.1)	99.2% sequence identity to <i>T. cruzi</i> DTU Tcl <sup>3</sup> (GenBank: JN050567.1)  99.7% sequence identity to <i>T. cruzi</i> , Strain Brazil Clone A (GenBank: WNWZ01000401.1)
<b>Viable Cell Count by Hemacytometry<sup>2</sup></b>	> 10 <sup>6</sup> cells per mL	1.6 × 10 <sup>8</sup> cells per mL
<b>Viability<sup>1</sup></b> 4 days at 37°C in an aerobic atmosphere with 5% CO <sub>2</sub> in DMEM supplemented with 10% HIFBS	Growth	Growth
<b>Sterility (14-day incubation)<sup>1</sup></b> Trypticase soy broth, 37°C and 26°C, aerobic Sabouraud broth, 37°C and 26°C, aerobic Sheep blood agar, 37°C, aerobic Sheep blood agar, 37°C, anaerobic Thioglycollate broth, 37°C, anaerobic	No growth No growth No growth No growth No growth	No growth No growth No growth No growth No growth
<b>Mycoplasma Contamination<sup>1</sup></b> DNA Detection by PCR	None detected	None detected

<sup>1</sup>Testing completed on vial, post-freeze material.

<sup>2</sup>Testing completed on bulk material prior to vialing and freezing.

<sup>3</sup>Cosentino, R. O. and F. Agüero. "A Simple Strain Typing Assay for *Trypanosoma cruzi*: Discrimination of Major Evolutionary Lineages from a Single Amplification Product." *PLoS Negl. Trop. Dis.* 6 (2012): e1777. PubMed: 22860154.

Figure 1: Cellular Morphology



/Sonia Bjorum Brower/  
Sonia Bjorum Brower

Technical Manager or designee, ATCC Federal Solutions

25 JUN 2025

ATCC®, on behalf of BEI Resources, hereby represents and warrants that the material provided under this certificate has been subjected to the tests and procedures specified and that the results described, along with any other data provided in this certificate, are true and accurate to the best of ATCC®'s knowledge.

ATCC® is a trademark of the American Type Culture Collection.  
You are authorized to use this product for research use only. It is not intended for human use.

