

***Borrelia burgdorferi*, Signature-Tagged Mutagenesis Library Clone T07TC477 (Gene BB\_J48)**

**Catalog No. NR-59645**

**Product Description:**

*Borrelia burgdorferi* (*B. burgdorferi*), strain B31 5A18NP1 STM library clone T07TC477 was produced by signature-tagged mutagenesis (STM) of the BB\_J48 gene. NR-59645 was produced by inoculation of the deposited material into Revised Barbour-Stoenner-Kelly medium supplemented with 200 µg/mL kanamycin and 40 µg/mL gentamicin and grown for 11 days at 33°C in a microaerophilic atmosphere to produce this lot. Quality control testing was completed under propagation conditions unless otherwise noted.

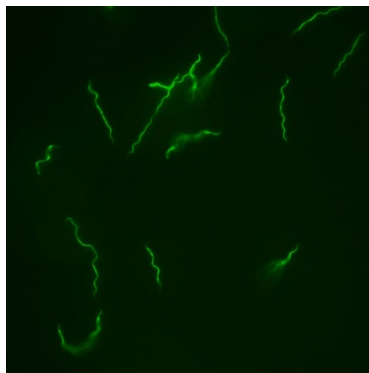
**Lot: 70066193**

**Manufacturing Date: 20MAY2024**

TEST	SPECIFICATIONS	RESULTS
<b>Phenotypic Analysis</b> Cellular morphology Motility (wet mount)	Spirochete Report results	Spirochete (Figure 1) Motile
<b>Purity</b> 11 days at 37°C in an aerobic atmosphere with 5% CO <sub>2</sub> in Tryptic Soy agar with 5% defibrinated sheep blood	No growth observed	No growth observed
<b>Viability (post-freeze)</b> Visual observation LIVE/DEAD® BacLight™ Bacterial Viability	Growth Green fluorescence visible	Growth Green fluorescence visible <sup>1</sup>

<sup>1</sup>Determined after 11 days at 33°C in a microaerophilic atmosphere in Revised Barbour-Stoenner-Kelly broth supplemented with 200 µg/mL kanamycin and 40 µg/mL gentamicin with LIVE/DEAD® BacLight™ Bacterial Viability Kit, 1000× magnification (Invitrogen™ L7007). Cells with a compromised membrane that are dead or dying will stain red, while cells with an intact membrane will stain green.

**Figure 1: LIVE/DEAD® BacLight™ Bacterial Viability**



/Sonia Bjorum Brower/  
Sonia Bjorum Brower

21 JUL 2025

Technical Manager or designee, ATCC Federal Solutions

ATCC®, on behalf of BEI Resources, hereby represents and warrants that the material provided under this certificate has been subjected to the tests and procedures specified and that the results described, along with any other data provided in this certificate, are true and accurate to the best of ATCC®'s knowledge.

ATCC® is a trademark of the American Type Culture Collection.  
You are authorized to use this product for research use only. It is not intended for human use.

