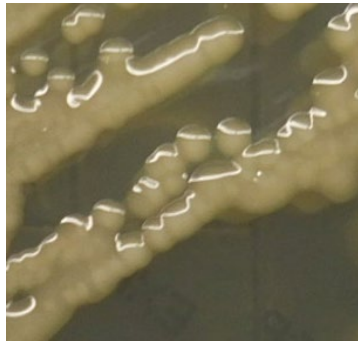


TEST	SPECIFICATIONS	RESULTS
Genotypic Analysis Sequencing of 16S ribosomal RNA gene (~ 1430 base pairs)	≥ 99% sequence identity to <i>K. pneumoniae</i> , strain BIDMC 5 (GenBank: JCNH01000006.1)	99.6% sequence identity to <i>K. pneumoniae</i> , strain BIDMC 5 (GenBank: JCNH01000006.1)
Purity (post-freeze) 7 days at 37°C in an aerobic atmosphere with and without 5% CO ₂ on Tryptic Soy agar	Growth consistent with expected colony morphology	Growth consistent with expected colony morphology
Viability (post-freeze)	Growth	Growth

¹Minimum Inhibitory Concentration (MIC); MIC Interpretation Guideline: CLSI M100-S28 (2018)

²*K. pneumoniae*, strain BIDMC 5 was deposited as resistant to cefepime. Antibiotic susceptibility testing performed on lot 70007979 utilized the susceptibility interpretations as reported by the VITEK® (AST-GN83) card, which reported the cefepime MIC of 2 µg/mL as resistant. However, because this isolate is not a confirmed ESBL-producer, CSLI recommendations are not to modify the interpretation based on the susceptibilities of other antibiotics in the same class. As a result, the specification for cefepime has been changed to sensitive following CLSI guidelines.

Figure 1: Colony Morphology



/Sonia Bjorum Brower/
Sonia Bjorum Brower

Technical Manager or designee, ATCC Federal Solutions

20 NOV 2025

ATCC®, on behalf of BEI Resources, hereby represents and warrants that the material provided under this certificate has been subjected to the tests and procedures specified and that the results described, along with any other data provided in this certificate, are true and accurate to the best of ATCC®'s knowledge.

ATCC® is a trademark of the American Type Culture Collection.

You are authorized to use this product for research use only. It is not intended for human use.

