

Toxoplasma gondii, Strain RH-88

Catalog No. NR-223

(Derived from ATCC® 50838™)

Product Description:

Toxoplasma gondii (*T. gondii*), strain RH-88 was derived from a clone of the RH strain. The RH strain was isolated in 1939 from a six-year-old boy with a lethal case of encephalitis in Cincinnati, Ohio. NR-223 was produced by cultivation of BEI Resources seed lot 3919534 in human foreskin fibroblast cells (ATCC® CRL-1634™) with Dulbecco's Minimal Essential Medium (DMEM) supplemented with 10% (v/v) heat-inactivated fetal bovine serum (HIFBS) for 3 days at 37°C in an aerobic atmosphere with 5% CO₂ until lysis of the host cell monolayer was reached.

Lot: 70068917

Manufacturing Date: 10JUN2024

BEI Resources is committed to ensuring digital accessibility for people with disabilities. This Certificate of Analysis contains complex tables and may not be fully accessible. Please let us know if you encounter accessibility barriers and a fully accessible document will be provided: E-mail: Contact@BEIResources.org. We try to respond to feedback within 24 hours.

TEST	SPECIFICATIONS	RESULTS
Cell Morphology¹ 3 days at 37°C in an aerobic atmosphere with 5% CO ₂ in DMEM supplemented with 10% HIFBS in human foreskin fibroblast cells (ATCC® CRL-1634™)	Report results	Refractive; crescent-shaped tachyzoites visible (Figure 1)
Genotypic Analysis² Sequencing of uracil phosphoribosyltransferase (UPRT) intron 1 (~ 470 base pairs) (Figure 2) Sequencing of UPRT intron 1 (~ 530 base pairs) (Figure 2)	Consistent with <i>T. gondii</i> , haplotype I (GenBank: AY143147.1) ≥ 99% sequence identity to <i>T. gondii</i> , strain RH-88 (GenBank: CM033567.1)	Consistent with <i>T. gondii</i> , haplotype I (GenBank: AY143147.1) 100% sequence identity to <i>T. gondii</i> , strain RH-88 (GenBank: CM033567.1)
Viable Cell Count by Hemacytometry²	> 10 ⁶ cells/mL	4.8 × 10 ⁷ cells/mL
Viability¹ 3 days at 37°C in an aerobic atmosphere with 5% CO ₂ in DMEM supplemented with 10% HIFBS in human foreskin fibroblast cells (ATCC® CRL-1634™)	Growth	Growth
Sterility (14-day incubation)¹ Trypticase soy broth, 37°C and 26°C, aerobic Sabouraud broth, 37°C and 26°C, aerobic Sheep blood agar, 37°C, aerobic Sheep blood agar, 37°C, anaerobic Thioglycollate broth, 37°C, anaerobic	No growth No growth No growth No growth No growth	No growth No growth No growth No growth No growth
Mycoplasma Contamination¹ DNA Detection by PCR	None detected	None detected

¹Testing completed on vial, post-freeze material.

²Testing completed on bulk material prior to vialing and freezing.

Figure 1: Colony Morphology

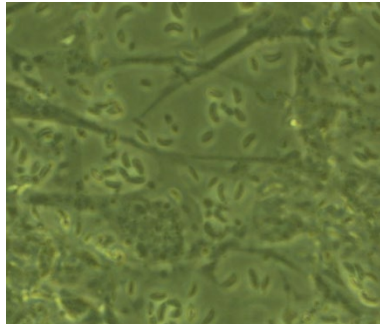


Figure 2: *T. gondii*, Strain RH-88 UPRT intron 1 Sequence

```

CAAACGACCA GGAAGAAAGC ATTCTCCAGG ACATCATCAC GAGGTAATCC TTCAACCGAA GTTTGCTTTC CGTGACTCTG
CCTGTTGGTT AACTGCGTG GCCTTCCCGT CCTGCGGCC CCTTCTCTCC GCTTGCTGTT TAAATGCTCG TCCTCGTTTT
CCTTCTGACC GCATCCCGT ATATTTTAAG GAGAGGGAAA CAGGCGTGAG TTGGACGGAA TGAAAGTTCT CGGCCTGTAC
GCCGGTTGTC GCGGTCGTTT GCAGATTGCT TTTTCTTCG AATCGGTGCT GTAACCCCTCG CGAAGAACGA CGCTGCAAAC
GACTTCTCGA ACTCTCAGTC GTGTACTTTA CGTGCTTCCT TTCAGGGACC TCCCCCTGCG TTAATCATT GTATTACAG
CTACGAAGTG TCTTGCAAGG TGGATTCCCTG CCAGGCTCCA TGTCTCACTC GGTGCGTTTT CGGAAAAGTT CATTGTGAAC
GTCCCCTTG CGTGTCATGA CTTTATCAGG TTTCCCAATG TGGTGCTCAT G
    
```

/Sonia Bjorum Brower/
Sonia Bjorum Brower

Technical Manager or designee, ATCC Federal Solutions

22 JUL 2025

ATCC®, on behalf of BEI Resources, hereby represents and warrants that the material provided under this certificate has been subjected to the tests and procedures specified and that the results described, along with any other data provided in this certificate, are true and accurate to the best of ATCC®'s knowledge.

ATCC® is a trademark of the American Type Culture Collection.

You are authorized to use this product for research use only. It is not intended for human use.

