

**Entamoeba histolytica, Strain IP:1182:2 (xenic)**

**Catalog No. NR-20088**

**Product Description:**

*Entamoeba histolytica* (*E. histolytica*), strain IP:1182:2 was isolated in 1982 from a sigmoidoscopy of an adult Canadian male with amoebic dysentery following a brief visit to Honduras. NR-20088 was produced by cultivation of BEI Resources seed lot 60240100 in Trypticase – Yeast Extract – Gastric Mucin (TYGM-9) medium supplemented with 5% heat-inactivated adult bovine serum (HIBS), 1.8% rice starch solution, 10% Tween 80 ethanolic solution (v/v) and 1,000 I.U./mL penicillin and 1,000 µg/mL streptomycin. After a series of passages, the culture was grown for 2 days at 35°C in a xenic and microaerophilic atmosphere to produce this lot.

**Lot: 70070766**

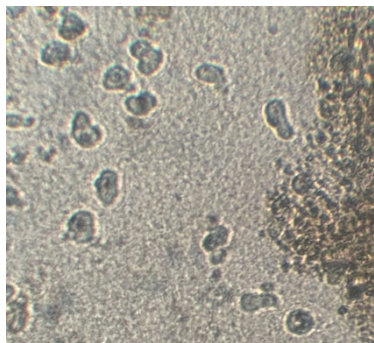
**Manufacturing Date: 07MAY2025**

TEST	SPECIFICATIONS	RESULTS
<b>Cellular Morphology<sup>1</sup></b> 3 days at 35°C in a microaerophilic atmosphere in TYGM-9 medium supplemented with 5% HIBS, 1.8% rice starch solution and 10% Tween 80 ethanolic solution	Report results	Adherent, motile, amoeboid cells visible (Figure 1)
<b>Genotypic Analysis<sup>2</sup></b> Sequencing of 18S ribosomal RNA (rRNA) gene (~ 910 base pairs)	≥ 99% sequence identity to <i>E. histolytica</i> type strain (GenBank: AP023147.1)	100% sequence identity to <i>E. histolytica</i> type strain (GenBank: AP023147.1)
<b>Viable Cell Count by Hemacytometry<sup>2</sup></b>	> 10 <sup>6</sup> cells/mL	1.5 × 10 <sup>6</sup> cells/mL
<b>Viability<sup>1</sup></b> 3 days at 35°C in a microaerophilic atmosphere in TYGM-9 medium supplemented with 5% HIBS, 1.8% rice starch solution and 20% Tween 80 ethanolic solution	Growth	Growth

<sup>1</sup>Testing completed on vial, post-freeze material

<sup>2</sup>Testing completed on bulk material prior to vialing and freezing

**Figure 1: Cellular Morphology**



/Sonia Bjorum Brower/

Sonia Bjorum Brower

18 FEB 2026

Technical Manager or designee, ATCC Federal Solutions

ATCC®, on behalf of BEI Resources, hereby represents and warrants that the material provided under this certificate has been subjected to the tests and procedures specified and that the results described, along with any other data provided in this certificate, are true and accurate to the best of ATCC®'s knowledge.

ATCC® is a trademark of the American Type Culture Collection.

You are authorized to use this product for research use only. It is not intended for human use.

