

***Klebsiella pneumoniae*, Strain MRSN 6778**

**Catalog No. NR-55512**

This reagent is the tangible property of the U.S. Government.

**Product Description:**

*Klebsiella pneumoniae* (*K. pneumoniae*), strain MRSN 6778 was isolated in 2011 from a human urine sample in North America as part of a global surveillance program. NR-55512 was deposited as a susceptible strain, sensitive to amikacin, ceftazidime/avibactam, ertapenem, imipenem, meropenem, tetracycline and tigecycline, intermediately resistant to levofloxacin and piperacillin/tazobactam and resistant to ampicillin/sulbactam, aztreonam, cefepime, ceftazidime, ceftriaxone, ceftolozane/tazobactam, ciprofloxacin, gentamicin, tobramycin and trimethoprim/sulfamethoxazole. NR-55512 was produced by inoculation of BEI Resources seed lot 70049660 into Tryptic Soy broth and grown for 1 day at 37°C in an aerobic atmosphere. Broth inoculum was added to Tryptic Soy agar kolles, which were grown for 1 day at 37°C in an aerobic atmosphere to produce this lot. Quality control testing was completed under propagation conditions unless otherwise noted.

**Note:** Strain MRSN 6778 has been found to lose the plasmid carrying the *bla*<sub>CTX-M-15</sub> gene when not grown in the presence of cefepime. It is recommended that strain MRSN 6778 be maintained in medium containing 8 µg/mL cefepime to select for the gene conferring resistance to cefepime. The whole genome sequences of both the sensitive and resistant genotypes are available upon request.

**Lot: 70076807**

**Manufacturing Date: 16JUL2025**

BEI Resources is committed to ensuring digital accessibility for people with disabilities. This Certificate of Analysis contains complex tables and may not be fully accessible. Please let us know if you encounter accessibility barriers and a fully accessible document will be provided: E-mail: [Contact@BEIResources.org](mailto:Contact@BEIResources.org). We try to respond to feedback within 24 hours.

TEST	SPECIFICATIONS	RESULTS
<b>Phenotypic Analysis</b>		
Cellular morphology	Gram-negative rods	Gram-negative rods
Colony morphology	Report results	Circular, low convex, entire, smooth, mucoid and cream (Figure 1)
Motility (wet mount)	Report results	Non-motile
VITEK® MS (MALDI-TOF)	<i>K. pneumoniae</i>	<i>K. pneumoniae</i> (99.9%)
<b>Antibiotic Susceptibility Profile<sup>1,2</sup></b>		
Amikacin	Sensitive	Sensitive (≤ 2 µg/mL)
Ampicillin/sulbactam	Resistant	Resistant (≥ 32 µg/mL)
Aztreonam	Sensitive	Sensitive (≤ 1 µg/mL) <sup>3</sup>
Cefepime	Sensitive	Sensitive (≤ 1 µg/mL) <sup>4</sup>
Ceftazidime	Sensitive	Sensitive (≤ 1 µg/mL) <sup>5</sup>
Ceftazidime/avibactam	Sensitive	Sensitive (0.19 µg/mL)
Ceftolozane/tazobactam	Sensitive	Sensitive (0.19 µg/mL) <sup>6</sup>
Ceftriaxone	Sensitive	Sensitive (≤ 1 µg/mL) <sup>7</sup>
Ciprofloxacin	Resistant	Intermediate (2 µg/mL) <sup>8</sup>
Ertapenem	Sensitive	Sensitive (≤ 0.5 µg/mL)
Gentamicin	Sensitive	Sensitive (≤ 1 µg/mL) <sup>9</sup>
Imipenem	Sensitive	Sensitive (0.25 µg/mL)
Levofloxacin	Sensitive	Sensitive (1 µg/mL) <sup>10</sup>
Meropenem	Sensitive	Sensitive (≤ 0.25 µg/mL)
Piperacillin/tazobactam	Intermediate	Sensitive (16 µg/mL) <sup>8</sup>
Tetracycline	Resistant	Resistant (16 µg/mL) <sup>11</sup>
Tigecycline	Sensitive	Sensitive (≤ 0.5 µg/mL) <sup>12</sup>
Tobramycin	Intermediate	Intermediate (8 µg/mL) <sup>13</sup>
Trimethoprim/sulfamethoxazole	Resistant	Resistant (≥ 320 µg/mL)

TEST	SPECIFICATIONS	RESULTS
<b>Genotypic Analysis</b> Sequencing of 16S ribosomal RNA gene (~ 1460 base pairs)	≥ 99% sequence identity to <i>K. pneumoniae</i> , strain MRSN 6778 (GenBank: JAGYEU010000114.1)	99.5% sequence identity to <i>K. pneumoniae</i> , strain MRSN 6778 (GenBank: JAGYEU010000114.1) <sup>14</sup>
<b>Purity</b> 7 days at 37°C in an aerobic atmosphere with and without 5% CO <sub>2</sub> on Tryptic Soy agar	Growth consistent with expected colony morphology	Growth consistent with expected colony morphology
<b>Viability</b>	Growth	Growth

<sup>1</sup>Minimum Inhibitory Concentration (MIC); MIC Interpretation Guideline: CLSI M100-S28 (2018)

<sup>2</sup>Antibiotic susceptibility was tested using a combination of bioMérieux VITEK®2 GN74 and ETEST®.

<sup>3</sup>*K. pneumoniae*, strain MRSN 6778 was deposited as resistant to aztreonam, but showed MICs of 0.064 µg/mL to 0.19 µg/mL µg/mL (interpreted as sensitive) for lot 70049659 during QC testing.

<sup>4</sup>*K. pneumoniae*, strain MRSN 6778 was deposited as resistant to cefepime, but showed a MIC of 0.25 µg/mL (interpreted as sensitive) for lot 70049659 during QC testing.

<sup>5</sup>*K. pneumoniae*, strain MRSN 6778 was deposited as resistant to ceftazidime, but showed MICs of 0.19 µg/mL to 0.38 µg/mL (interpreted as sensitive) for lot 70049659 during QC testing.

<sup>6</sup>*K. pneumoniae*, strain MRSN 6778 was deposited as resistant to ceftolozane/tazobactam, but showed a MIC of 0.25 µg/mL (interpreted as sensitive) for lot 70049659 during QC testing.

<sup>7</sup>*K. pneumoniae*, strain MRSN 6778 was deposited as resistant to ceftriaxone, but showed MICs of 0.094 µg/mL to 0.125 µg/mL (interpreted as sensitive) for lot 70049659 during QC testing.

<sup>8</sup>The susceptibility result for this antibiotic is within one doubling dilution of specification, which is considered an equivalent result.

<sup>9</sup>*K. pneumoniae*, strain MRSN 6778 was deposited as resistant to gentamicin, but showed a MIC of 0.5 µg/mL (interpreted as sensitive) for lot 70049659 during QC testing.

<sup>10</sup>*K. pneumoniae*, strain MRSN 6778 was deposited as resistant to levofloxacin, but showed MICs of 0.75 µg/mL to 1 µg/mL (interpreted as sensitive) for lot 70049659 during QC testing.

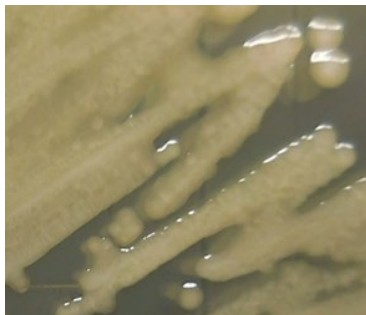
<sup>11</sup>*K. pneumoniae*, strain MRSN 6778 was deposited as sensitive to tetracycline, but showed a MIC of ≥ 256 µg/mL (interpreted as resistant) for lot 70049659 during QC testing.

<sup>12</sup>MIC Interpretation Guideline: EUCAST Version 8.0 (2018)

<sup>13</sup>*K. pneumoniae*, strain MRSN 6778 was deposited as resistant to tobramycin, but showed a MIC of 6 µg/mL (interpreted as intermediately resistant) for lot 70049659 during QC testing.

<sup>14</sup>Also consistent with other *Klebsiella* species

Figure 1: Colony Morphology



/Sonia Bjorum Brower/

Sonia Bjorum Brower

Technical Manager or designee, ATCC Federal Solutions

26 MAR 2026

ATCC®, on behalf of BEI Resources, hereby represents and warrants that the material provided under this certificate has been subjected to the tests and procedures specified and that the results described, along with any other data provided in this certificate, are true and accurate to the best of ATCC®'s knowledge.

ATCC® is a trademark of the American Type Culture Collection.

You are authorized to use this product for research use only. It is not intended for human use.

