

**Candida albicans, Strain 23Q**

**Catalog No. NR-29341**

**Product Description:**

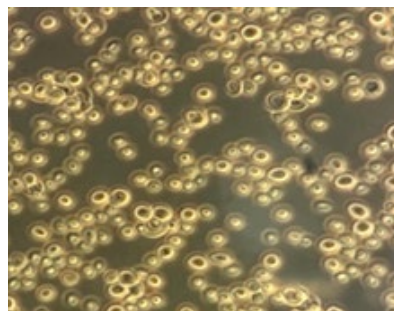
*Candida albicans* (*C. albicans*), strain 23Q was isolated from a human in China. NR-29341 was produced by inoculation of BEI Resources seed lot 61662625 onto Yeast Mold agar and grown for 3 days at 25°C in an aerobic atmosphere. The agar growth was harvested with 20% glycerol to produce this lot. Quality control testing was completed under propagation conditions unless otherwise noted.

**Lot: 70079691**

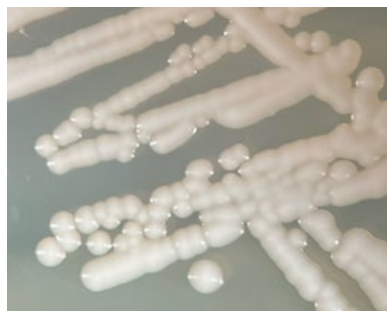
**Manufacturing Date: 14NOV2025**

TEST	SPECIFICATIONS	RESULTS
<b>Phenotypic Analysis</b> Cellular morphology  Colony morphology  VITEK® 2 (YST card) VITEK® MS (MALDI-TOF)	Report results  Report results  <i>C. albicans</i> (≥ 89%) <i>C. albicans</i>	Single, round to ovoid, thin-walled (Figure 1)  Butyrous, round, raised, glinting and smooth (Figure 2)  <i>C. albicans</i> (97%) <i>C. albicans</i> (99.9%)
<b>Genotypic Analysis</b> Sequencing of 18S ribosomal RNA (rRNA) gene, internal transcribed spacer (ITS) 1, 5.8S rRNA gene, ITS 2, partial 26S rRNA (~ 460 base pairs)  Sequencing of 28S rRNA gene (~ 550 base pairs)	≥ 99% sequence identity to <i>C. albicans</i> type strain (GenBank: CP017630.1)  ≥ 99% sequence identity to <i>C. albicans</i> type strain (GenBank: CP017630.1)	99.6% sequence identity to <i>C. albicans</i> type strain (GenBank: CP017630.1)  99.8% sequence identity to <i>C. albicans</i> type strain (GenBank: CP017630.1)
<b>Purity</b> Nutrient broth with 0.1% Yeast Extract at 25°C 3 days in an aerobic atmosphere  Nutrient broth with 0.1% Yeast Extract at 37°C 3 days in an aerobic atmosphere	No bacterial growth  No bacterial growth	No bacterial growth  No bacterial growth
<b>Viability (post-freeze)</b> 3 days at 25°C in an aerobic atmosphere on Emmons' Modified Sabouraud Dextrose agar	Growth	Growth

**Figure 1: Cellular Morphology**



**Figure 2: Colony Morphology**



/Sonia Bjorum Brower/

Sonia Bjorum Brower

27 MAR 2026

Technical Manager or designee, ATCC Federal Solutions

ATCC®, on behalf of BEI Resources, hereby represents and warrants that the material provided under this certificate has been subjected to the tests and procedures specified and that the results described, along with any other data provided in this certificate, are true and accurate to the best of ATCC®'s knowledge.

ATCC® is a trademark of the American Type Culture Collection.

You are authorized to use this product for research use only. It is not intended for human use.

