

## Monoclonal Anti-Shiga Toxin 2 Subunit B, Clone 5A5-E7 (immunoglobulin G, mouse)

### Catalog No. NR-10183

This reagent is the tangible property of the U.S. Government.

### Product Description: Antibody Class: IgG

Mouse monoclonal antibody prepared against the B subunit of Shiga-like toxin 2 from *Escherichia coli* (*E. coli*) was purified from mouse ascites by protein G affinity chromatography.

**Lot: 58209699**

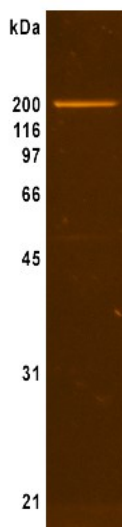
**Manufacturing Date: 15SEP2008**

TEST	SPECIFICATIONS	RESULTS
<b>Appearance</b>	Clear and colorless	Clear and colorless
<b>SDS-PAGE (SYPRO Orange densitometer scan)</b>	Dominant band ~ 150 kDa > 95% pure	Dominant band ~ 150 kDa > 95% pure <sup>1</sup> (Figure 1)
<b>Concentration by Bicinchoninic Acid Protein Assay</b>	1 mg/mL ± 5%	1 mg/mL
<b>Functional Activity</b> ELISA titer Recombinant shiga toxin type 2 subunit B <sup>2</sup> Shiga toxin type 2	Report results Report results	Reactivity greater than control (Figure 2A) Reactivity greater than control (Figure 2B)
<b>Sterility</b>	Filter sterilized (0.22 µM filter)	Filter sterilized (0.22 µM filter)

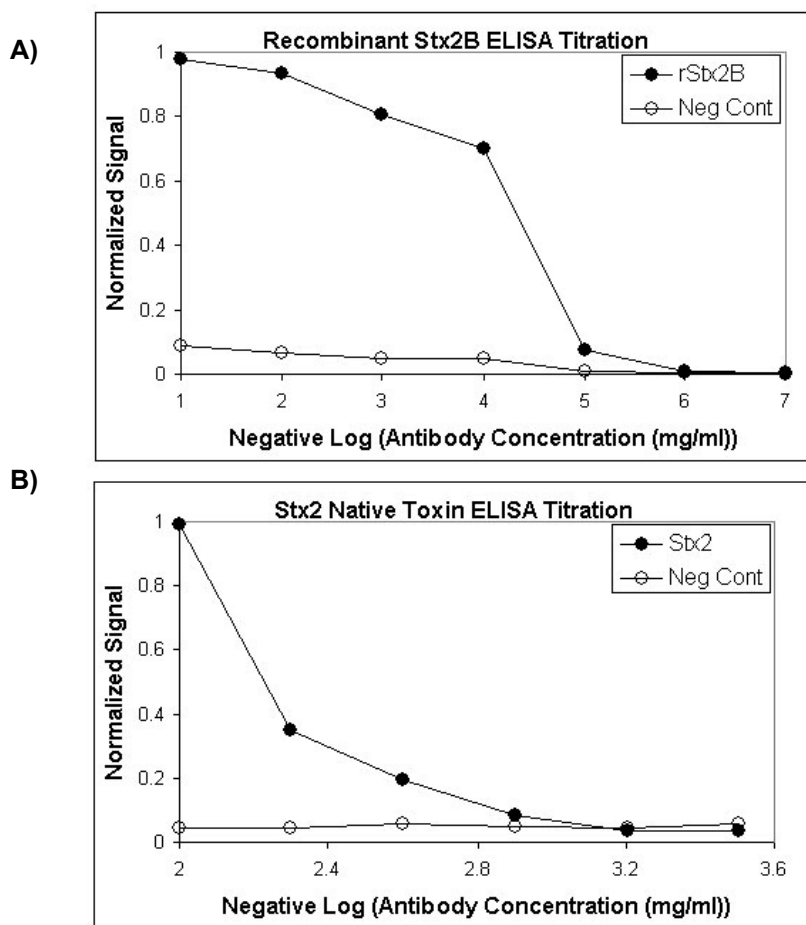
<sup>1</sup>Lower mass band represents uncomplexed IgG heavy chain.

<sup>2</sup>BEI Resources NR-4677.

**Figure 1**



**Figure 2**



**Date:** 17 DEC 2008

**Signature:** Signature on File

**Title:** Technical Manager or designee, BEI Authentication

ATCC®, on behalf of BEI Resources, hereby represents and warrants that the material provided under this certificate has been subjected by the contractor to the tests and procedures specified and that the results described, along with any other data provided in this certificate, are true and accurate to the best of ATCC®'s knowledge.

ATCC® is a trademark of the American Type Culture Collection.  
 You are authorized to use this product for research use only. It is not intended for human use.

