

Monoclonal Anti-*Clostridium botulinum* Neurotoxin Type A, Light Chain, Clone 2E5.7 (immunoglobulin M, Mouse)

Catalog No. NR-9402

Product Description: Antibody Class: IgM κ

Mouse monoclonal antibody to the light chain of *Clostridium botulinum* neurotoxin type A was purified by mannan-binding protein affinity chromatography from a mouse hybridoma clonal cell line (Clone 2E5.7).

Lot: 57897953

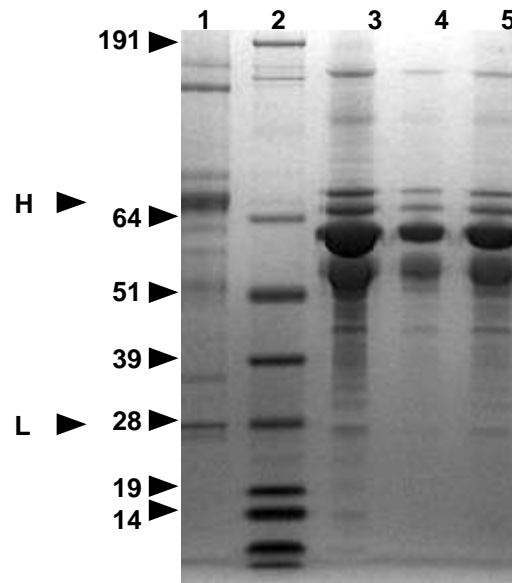
Manufacturing Date: 16OCT2007

TEST	SPECIFICATIONS	RESULTS
Antibody Class	Report results	IgM κ
SDS-PAGE (Coomassie Blue stain)	Report results	Figure 1
Concentration by Mouse IgM ELISA ¹	Report results	1 mg/mL
Sodium Azide Content	Report results	0.02%

¹Mouse IgM ELISA Quantitation kit from Bethyl Laboratories, Inc (E90-101).

Figure 1. SDS-PAGE of NR-9402.

Lane 1: 7 μ g of purified mouse IgM (Zymed)
 Lane 2: SeeBlue[®] Pre-stained Standard (Invitrogen)
 Lane 3: 28 μ L (diluted 1:10)
 Lane 4: 7 μ L (diluted 1:10)
 Lane 5: 14 μ L (diluted 1:10)
 H and L refer to heavy and light chains, respectively.



Date: 12 JAN 2009

Signature: Signature on File

Title: Technical Manager, BEI Authentication or designee

ATCC[®], on behalf of BEI Resources, hereby represents and warrants that the material provided under this certificate has been subjected by the contributor and ATCC[®] to the tests and procedures specified and that the results described, along with any other data provided in this certificate, are true and accurate to the best of ATCC[®]'s knowledge.

ATCC[®] is a trademark of the American Type Culture Collection.

You are authorized to use this product for research use only. It is not intended for human use.

