

Genomic DNA from *Acinetobacter baumannii*, Strain H72721

Catalog No. NR-10146

Product Description: Genomic DNA was obtained from a preparation of *Acinetobacter baumannii* (*A. baumannii*), strain H72721 isolated in June 2006 at Landstahl Regional Medical Center in Germany from human sputum of a Canadian soldier injured in Afghanistan.

Lot¹: 58179035

Manufacturing Date: 19MAY2008

TEST	SPECIFICATIONS	RESULTS
Sequencing of 16S Ribosomal RNA Gene (~ 1370 bp)	Identical to BEI Resources NR-9667 (660 bp) Consistent with <i>A. baumannii</i>	Identical to BEI Resources NR-9667 (660 bp) Consistent with <i>A. baumannii</i>
Agarose Gel Electrophoresis	High molecular weight chromosomal DNA	High molecular weight chromosomal DNA (Figure 1)
Concentration by PicoGreen[®] Measurement	4 to 6 µg in 25 to 100 µL per vial	5.5 µg in 45 µL per vial (121 µg/mL)
Functional Activity by PCR Amplification 16S ribosomal RNA gene	~ 1500 bp amplicon	~ 1500 bp amplicon
OD₂₆₀/OD₂₈₀ Ratio	1.7 to 1.9	1.8
Bacterial Inactivation 10% of total yield plated on Nutrient Agar ^{2,3}	No viable bacteria detected	No viable bacteria detected

¹*A. baumannii*, strain H72721 was deposited by Andrew E. Simor, Chief, Department of Microbiology, Sunnybrook Health Science Centre, Toronto, Ontario, Canada. The bacterial preparation used for extraction of genomic DNA was produced by broth (Tryptic Soy Broth, BD 211825) culture of the deposited material. After incubation for 24 hours at 37°C and aerobic atmosphere, genomic DNA was extracted using proprietary technology.

²7 days at 37°C in an aerobic atmosphere.

³An extraction procedure was used that has been shown to consistently inactivate 100% of Gram-negative bacteria.

Date: 31 JUL 2008

Signature: Signature on File

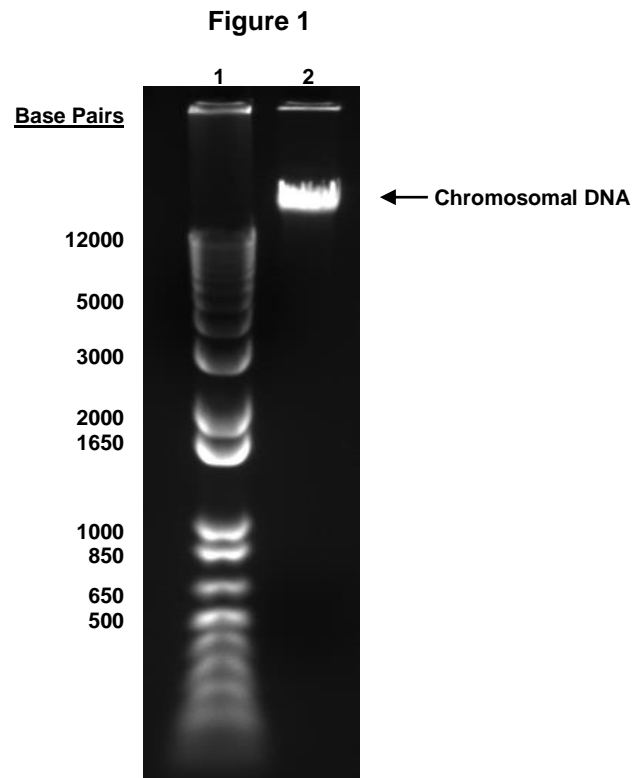
Title: Technical Manager, BEI Authentication or designee

ATCC[®], on behalf of BEI Resources, hereby represents and warrants that the material provided under this certificate has been subjected to the tests and procedures specified and that the results described, along with any other data provided in this certificate, are true and accurate to the best of ATCC[®]'s knowledge.

ATCC[®] is a trademark of the American Type Culture Collection.

You are authorized to use this product for research use only. It is not intended for human use.





Lane 1: Invitrogen™ TrackIt 1 Kb Plus DNA Ladder™
Lane 2: 200 ng of NR-10146