

## Genomic DNA from *Burkholderia thailandensis*, Strain DW503

**Catalog No. NR-9322**

**Product Description:** Genomic DNA was isolated from a preparation of *Burkholderia thailandensis* (*B. thailandensis*), strain DW503, an allelic exchange strain of an environmental isolate, *B. thailandensis*, strain E264.

**Lot<sup>1</sup>: 57960662**

**Manufacturing Date: 26MAR2008**

TEST	SPECIFICATIONS	RESULTS
<b>Sequencing of 16S Ribosomal RNA Gene</b> (~ 1400 bp)	Identical to BEI Resources NR-4075 Identical to GenBank EF535235.1 Consistent with <i>B. thailandensis</i>	Identical to BEI Resources NR-4075 Identical to GenBank EF535235.1 Consistent with <i>B. thailandensis</i>
<b>Agarose Gel Electrophoresis</b>	High molecular weight chromosomal DNA	High molecular weight chromosomal DNA (Figure 1)
<b>Concentration by PicoGreen<sup>®</sup> Measurement</b>	4 to 6 µg in 25 to 100 µL per vial	5.7 µg in 33 µL per vial (173 µg/mL)
<b>Functional Activity by PCR Amplification</b> 16S ribosomal RNA gene	~ 1500 bp amplicon	~ 1500 bp amplicon
<b>OD<sub>260</sub>/OD<sub>280</sub> Ratio</b>	1.7 to 1.9	1.9
<b>Bacterial Inactivation</b> 10% of total yield plated on Tryptic Soy Agar <sup>2,3</sup>	No viable bacteria detected	No viable bacteria detected

<sup>1</sup>*B. thailandensis*, strain DW503 was deposited by Dr. Herbert P. Schweizer of the Department of Microbiology, Immunology and Pathology, College of Veterinary Medicine and Biomedical Sciences, Colorado State University, Fort Collins, Colorado. The bacterial preparation used for extraction of genomic DNA was produced by LB Broth culture of the deposited material. After incubation for 48 hours at 30°C in an aerobic atmosphere, genomic DNA was extracted using proprietary technology.

<sup>2</sup>7 days at 37°C in an aerobic atmosphere

<sup>3</sup>An extraction procedure was used that has been shown to consistently inactivate 100% of Gram-negative bacteria.

**Date:** 24 FEB 2009

**Signature:** Signature on File

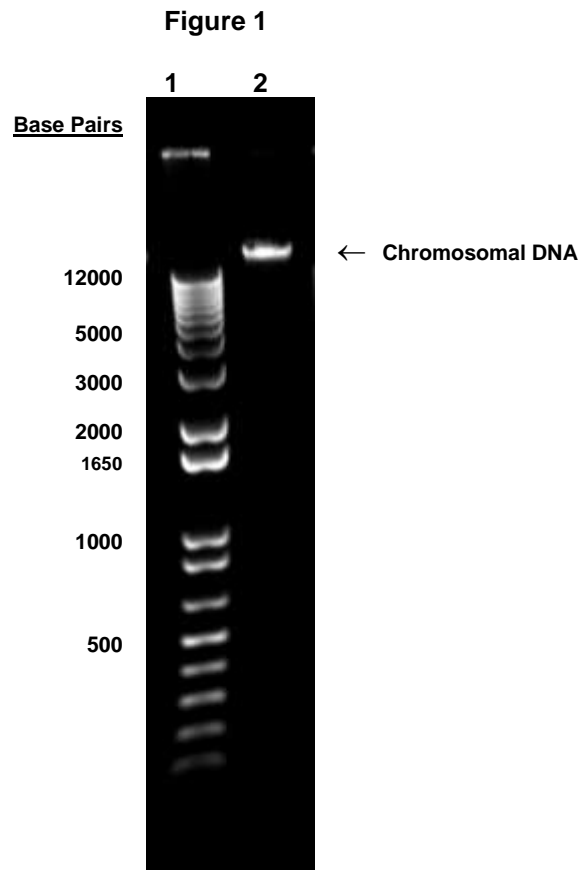
**Title:** Technical Manager, BEI Authentication or designee

ATCC<sup>®</sup>, on behalf of BEI Resources, hereby represents and warrants that the material provided under this certificate has been subjected to the tests and procedures specified and that the results described, along with any other data provided in this certificate, are true and accurate to the best of ATCC<sup>®</sup>'s knowledge.

ATCC<sup>®</sup> is a trademark of the American Type Culture Collection.

You are authorized to use this product for research use only. It is not intended for human use.





Lane 1: Invitrogen™ TrackIt™ 1 Kb Plus DNA Ladder  
Lane 2: 200 ng of NR-9322