

Bacillus anthracis* Superoxide Dismutase SOD15 (Locus_Tag: BA_1489) with N-Terminal Histidine Tag, Recombinant from *Escherichia coli

Catalog No. NR-12128

This reagent is the tangible property of the U.S. Government.

Product Description: NR-12128 is a truncated recombinant form of the *Bacillus anthracis* (*B. anthracis*) superoxide dismutase SOD15 (locus_tag: BA_1489). SOD15 is one of the superoxide dismutases present in the outermost layers of the spore and helps to provide *B. anthracis* protection against oxidative stress and enhance pathogenicity in the lung.

Lot: 58394250

Manufacturing Date: 27JAN2009

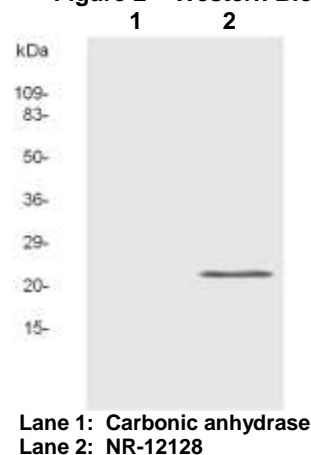
TEST	SPECIFICATIONS	RESULTS
Appearance	Clear and colorless, no particulate matter	Clear and colorless, no particulate matter
SDS-PAGE (SYPRO Orange densitometer scan)	Report results	27 kDa band represents 91% of total protein (Figure 1)
SELDI-TOF Mass Spectrometry	Measured mass within 5% of expected mass based on amino acid sequence (26909 Da)	Measured mass within 1% of expected mass based on amino acid sequence (26865 Da)
SELDI-TOF Mass Spectrometry of Protease Digested Protein	> 50% of total residues accounted for in peptides of expected mass	61% of total residues accounted for in peptides of expected mass
Concentration by Bicinchoninic Acid Protein Assay	Report results	0.07 mg/mL
Functional Activity by Western Blot ¹ (Figure 2) Recombinant SOD15 (NR-12128) Carbonic anhydrase	Reactive Non-reactive	Reactive Non-reactive
Sterility	0.22 µm filter sterilized	0.22 µm filter sterilized
Absorbance Ratio (OD ₂₈₀ /OD ₂₆₀)	Report results	1.53

¹Using rabbit polyclonal antibody to SOD15 (BEI Resources NR-12129)

Figure 1 – SDS-PAGE



Figure 2 – Western Blot



Date: 03 DEC 2014

Signature:



Title: Technical Manager, BEI Authentication or designee

ATCC®, on behalf of BEI Resources, hereby represents and warrants that the material provided under this certificate has been subjected by the contractor to the tests and procedures specified and that the results described, along with any other data provided in this certificate, are true and accurate to the best of ATCC®'s knowledge.

ATCC® is a trademark of the American Type Culture Collection.

You are authorized to use this product for research use only. It is not intended for human use.

