

Bacillus anthracis* Superoxide Dismutase SODA-1 (Locus_Tag: BA_4499) with N-terminal Histidine Tag, Recombinant from *Escherichia coli

Catalog No. NR-10505

This reagent is the tangible property of the U.S. Government.

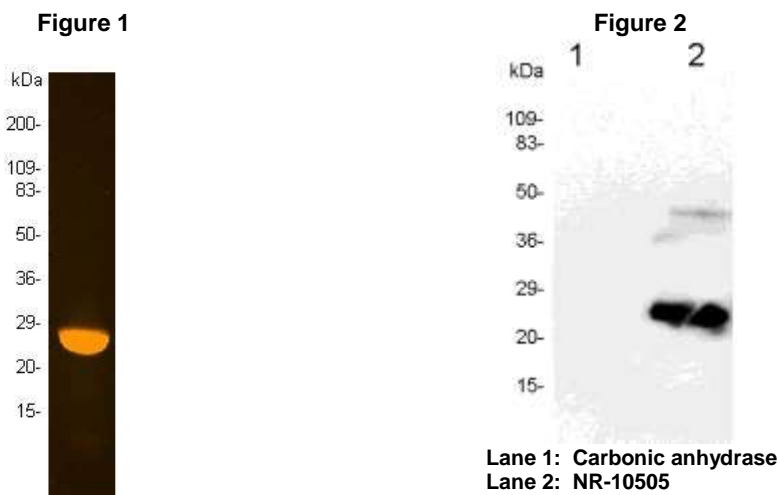
Product Description: NR-10505 is a truncated recombinant form of the *Bacillus anthracis* (*B. anthracis*) superoxide dismutase SODA-1 (locus_tag: BA_4499). SODA-1 is one of the superoxide dismutases present in the outermost layers of the spore and helps to provide *B. anthracis* protection against oxidative stress and enhance pathogenicity in the lung.

Lot: 58352685

Manufacturing Date: 23OCT2008

TEST	SPECIFICATIONS	RESULTS
Appearance	Clear and colorless, no particulate matter	Clear and colorless, no particulate matter
SDS-PAGE (SYPRO Orange densitometer scan)	Report results	25 kDa band represents 98% of total protein (Figure 1)
SELDI-TOF Mass Spectrometry	Measured mass within 5% of expected mass based on amino acid sequence (24827 Da)	Measured mass within 0.3% of expected mass based on amino acid sequence (24758 Da)
SELDI-TOF Mass Spectrometry of Protease Digested Protein	> 50% of total residues accounted for in peptides of expected mass	55% of total residues accounted for in peptides of expected mass
Concentration by Bicinchoninic Acid Protein Assay	Report results	1.0 mg/mL
Functional Activity by Western Blot ¹ (Figure 2) Recombinant <i>B. anthracis</i> SODA-1 (NR-10505) Carbonic anhydrase	Reactive Non-reactive	Reactive Non-reactive
Sterility	0.22 µm filter sterilized	0.22 µm filter sterilized
Absorbance Ratio (OD ₂₈₀ /OD ₂₆₀)	Report results	1.92

¹Using rabbit polyclonal antibody to *B. anthracis* SOD-1 (BEI Resources NR-10506)



Date: 03 DEC 2014

Signature: 

Title: Technical Manager, BEI Authentication or designee

ATCC[®], on behalf of BEI Resources, hereby represents and warrants that the material provided under this certificate has been subjected by the contractor to the tests and procedures specified and that the results described, along with any other data provided in this certificate, are true and accurate to the best of ATCC[®]'s knowledge.

ATCC[®] is a trademark of the American Type Culture Collection.

You are authorized to use this product for research use only. It is not intended for human use.

