

## Genomic DNA from *Burkholderia thailandensis*, Strain E264

**Catalog No. NR-10275**

**Product Description:** Genomic DNA was isolated from a preparation of *Burkholderia thailandensis* (*B. thailandensis*), strain E264 an environmental isolate obtained from a rice field soil sample in central Thailand.

**Lot<sup>1</sup>: 58243181**

**Manufacturing Date: 04NOV2008**

TEST	SPECIFICATIONS	RESULTS
<b>Sequencing of 16S Ribosomal RNA Gene</b> (~ 1390 bp)	Identical to BEI Resources NR-9907 Identical to GenBank EF535235.1 Consistent with <i>B. thailandensis</i>	Identical to BEI Resources NR-9907 Identical to GenBank EF535235.1 Consistent with <i>B. thailandensis</i>
<b>Agarose Gel Electrophoresis</b>	High molecular weight chromosomal DNA	High molecular weight chromosomal DNA (Figure 1)
<b>Concentration by PicoGreen<sup>®</sup> Measurement</b>	4 to 6 µg in 25 to 100 µL per vial	5.3 µg in 58 µL per vial (91 µg/mL)
<b>Functional Activity by PCR Amplification</b> 16S ribosomal RNA gene	~ 1500 bp amplicon	~ 1500 bp amplicon
<b>OD<sub>260</sub>/OD<sub>280</sub> Ratio</b>	1.7 to 1.9	1.8
<b>Bacterial Inactivation</b> 10% of total yield plated on Nutrient Agar <sup>2,3</sup>	No viable bacteria detected	No viable bacteria detected

<sup>1</sup>*B. thailandensis*, strain E264 was deposited by Dr. Sharon J. Peacock, PhD, FRPC, FRCPath, Head of Microbiology, Mahidol-Oxford Tropical Medicine Research Unit, Faculty of Tropical Medicine, Mahidol University, Bangkok, Thailand. The bacterial preparation used for extraction of genomic DNA was produced by Nutrient Broth culture of the deposited material. After incubation for 48 hours at 30°C in an aerobic atmosphere, genomic DNA was extracted using proprietary technology.

<sup>2</sup>7 days at 30°C in an aerobic atmosphere

<sup>3</sup>An extraction procedure was used that has been shown to consistently inactivate 100% of Gram-negative bacteria.

**Date:** 10 APR 2009

**Signature:** Signature on File

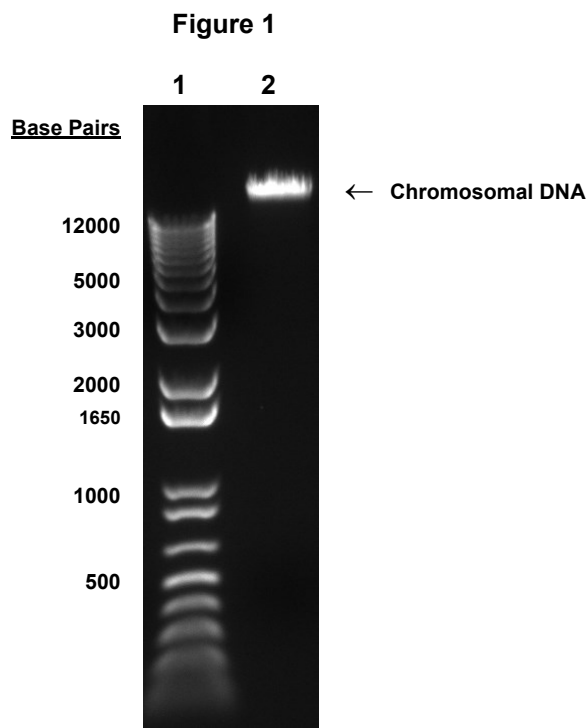
**Title:** Technical Manager, BEI Authentication or designee

ATCC<sup>®</sup>, on behalf of BEI Resources, hereby represents and warrants that the material provided under this certificate has been subjected to the tests and procedures specified and that the results described, along with any other data provided in this certificate, are true and accurate to the best of ATCC<sup>®</sup>'s knowledge.

ATCC<sup>®</sup> is a trademark of the American Type Culture Collection.

You are authorized to use this product for research use only. It is not intended for human use.





Lane 1: Invitrogen™ TrackIt™ 1 Kb Plus DNA Ladder  
Lane 2: 200 ng of NR-10275