

Polyclonal Anti-*Bacillus anthracis* Collagen-like Protein BclA (Locus_tag: BA_1222), (immunoglobulin G, Rabbit)

Catalog No. NR-9578

This reagent is the property of the U. S. Government.

Product Description: Polyclonal antiserum to the collagen-like protein (BclA) from *Bacillus anthracis* was produced in rabbit and purified by protein G affinity chromatography.

Lot: 58036868

Manufacturing Date: 01DEC2004

| TEST | SPECIFICATIONS | RESULTS |
|--|--|--|
| Appearance | Clear and colorless; no particulate matter | Clear and colorless; no particulate matter |
| SDS-PAGE (SYPRO Orange densitometer scan) | IgG band represents > 95% of total staining intensity | IgG band represents > 95% of total staining intensity (Figure 1) |
| Concentration by Bicinchoninic Acid Protein Assay | Report results | 1 mg/mL |
| Functional Activity Western Blot ¹ Recombinant BclA (BEI Resources NR-9577) Carbonic anhydrase ELISA titer ² (Figure 2) Recombinant BclA (BEI Resources NR-9577) Carbonic anhydrase | Reactive Not reactive Report results Not reactive | Reactive Not reactive > 1:1000 Not reactive |
| Sterility | 0.22 µm filter sterilized | 0.22 µm filter sterilized |

¹A dilution of 1:4000 of NR-9578 is recommended.

²A dilution of 1:1000 to 1:10000 of NR-9578 is recommended.

Figure 1

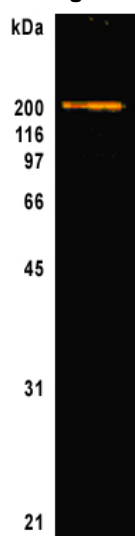
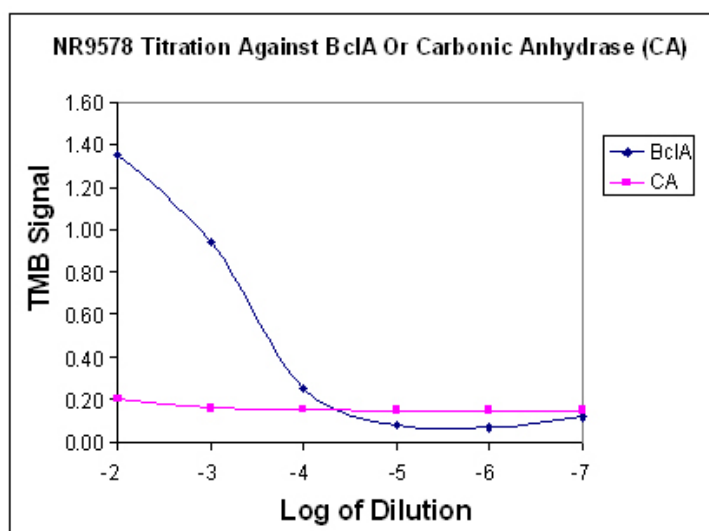


Figure 2



Date: 10 APR 2009

Signature: Signature on File

Title: Technical Manager, BEI Authentication or designee

ATCC®, on behalf of BEI Resources, hereby represents and warrants that the material provided under this certificate has been subjected by the contractor to the tests and procedures specified and that the results described, along with any other data provided in this certificate, are true and accurate to the best of ATCC®'s knowledge.

ATCC® is a trademark of the American Type Culture Collection.
You are authorized to use this product for research use only. It is not intended for human use.

