

## *Burkholderia thailandensis*, Strain E421

Catalog No. NR-9909

**Product Description:** *Burkholderia thailandensis* (*B. thailandensis*) are saprophytic motile, aerobic, Gram-negative coccobacilli. Strain E421 is an environmental isolate obtained from a rice field soil sample in northeast Thailand.

Lot<sup>1</sup>: 58243199

Manufacturing Date: 24OCT2008

TEST	SPECIFICATIONS	RESULTS
<b>Phenotypic Analysis</b> Cellular morphology Colony color and morphology on Nutrient Agar <sup>2</sup>  Growth on Ashdown's selective agar (ASA) <sup>2,3</sup>  Growth on <i>B. pseudomallei</i> selective agar (BPSA) <sup>2,4</sup>  Motility Analytical profile index (API 20 NE) <sup>5</sup> L-Arabinose <sup>6</sup>	Gram-negative rod Report results  Positive  Positive  Motile Report results Positive	Gram-negative rod Circular, convex, entire, cream and opaque (Figure 1) Positive: Circular, convex, entire, dark purple and opaque (Figure 2) Positive: Circular, convex, entire, dark pink and opaque (Figure 3) Motile Consistent with <i>Burkholderia</i> Positive
<b>Genotypic Analysis</b> Sequencing of 16S ribosomal RNA gene (~ 1390 bp)	Consistent with <i>B. thailandensis</i>	Consistent with <i>B. thailandensis</i>
<b>PCR Assay of Extracted DNA</b> 16S ribosomal RNA gene	~ 1500 bp amplicon	~ 1500 bp amplicon
<b>Viability (post-freeze)<sup>7</sup></b>	Growth	Growth

<sup>1</sup>NR-9909 was produced by inoculation of the deposited material into Nutrient Broth (BD 234000) and grown 48 hours at 30°C and aerobic atmosphere. Broth inoculum was added to Kolles and incubated for 48 hours at 30°C and aerobic atmosphere to produce this lot.

<sup>2</sup>48 hours at 30°C and aerobic atmosphere

<sup>3</sup>ASA is a gentamicin-containing media that results in selective growth of *B. pseudomallei* (Ashdown, L. R. "An Improved Screening Technique for Isolation of *Pseudomonas pseudomallei* from Clinical Specimens." *Pathology* 11 (1979): 293-297. PubMed: 460953).

<sup>4</sup>BPSA is a gentamicin-containing media that results in selective growth of *B. pseudomallei* and has improved recovery of more easily inhibited strains of *B. pseudomallei* (Howard, K. and T. J. Inglis. "Novel Selective Medium for Isolation of *Burkholderia pseudomallei*." *J. Clin. Microbiol.* 41 (2003): 3312-3316. PubMed: 12843080).

<sup>5</sup>*B. thailandensis* is not in the API database.

<sup>6</sup>*B. thailandensis* utilizes L-arabinose as a carbon source. This distinguishes it from *B. pseudomallei*, which does not utilize L-arabinose as a carbon source.

<sup>7</sup>48 hours at 30°C in Nutrient Broth

Figure 1

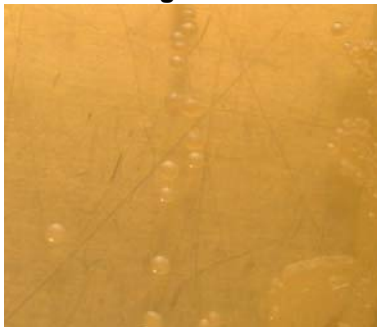
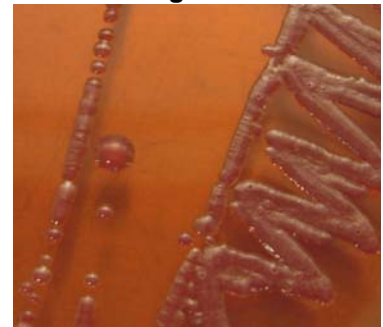


Figure 2



Figure 3



**Date:** 20 APR 2009

**Signature:** Signature on File

**Title:** Technical Manager, BEI Authentication or designee

ATCC<sup>®</sup>, on behalf of BEI Resources, hereby represents and warrants that the material provided under this certificate has been subjected to the tests and procedures specified and that the results described, along with any other data provided in this certificate, are true and accurate to the best of ATCC<sup>®</sup>'s knowledge.

ATCC<sup>®</sup> is a trademark of the American Type Culture Collection.

You are authorized to use this product for research use only. It is not intended for human use.

