

Plasmid pMRLB.43 Containing Gene Rv1411c (Protein LprG) from *Mycobacterium tuberculosis*

Catalog No. NR-13294

This reagent is the tangible property of the U.S. Government.

Product Description: NR-13294 is a recombinant expression vector containing *Mycobacterium tuberculosis* gene Rv1411c, which encodes secreted immunogenic protein LprG. Gene Rv1411c was amplified by PCR and cloned into pET23b for expression in *Escherichia coli*.

Lot: 04.EC.01.07

Manufacturing Date: 07JAN2004

| TEST | SPECIFICATIONS | RESULTS |
|---|---|---|
| Agarose Gel Electrophoresis (see attached QC Gel)¹ Linearization with <i>Cla</i> I Linearization with <i>Nde</i> I Linearization with <i>Hind</i> III Digestion with <i>Nde</i> I and <i>Hind</i> III | ~ 4.3 kb ~ 4.3 kb ~ 4.3 kb ~ 0.635 kb (insert); ~ 3.66 kb (vector) | ~ 4.3 kb ~ 4.3 kb ~ 4.3 kb ~ 0.635 kb; ~ 3.66 kb |
| Concentration by OD₂₆₀ | Report results | 0.1 µg/µL |
| Absorbance Ratio (OD₂₆₀/OD₂₈₀) | Report results | 1.9 |

¹Performed by Colorado State University under the TB Vaccine Testing and Research Materials Contract (NIH)

Date: 31 AUGUST 2009

Signature: Signature on File

Title: Technical Manager, BEI Authentication or designee

ATCC®, on behalf of BEI Resources, hereby represents and warrants that the material provided under this certificate has been subjected by the contractor to the tests and procedures specified and that the results described, along with any other data provided in this certificate, are true and accurate to the best of ATCC®'s knowledge.

ATCC® is a trademark of the American Type Culture Collection.

You are authorized to use this product for research use only. It is not intended for human use.



QC gel

Restriction enzymes used in QC analysis:

NdeI & HindIII (cloning), BamHI, ClaI (insert diagnostic – 1 site each in 1411c)

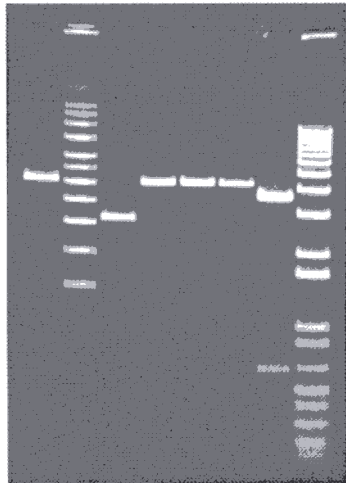
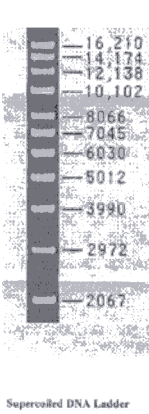
Expected size of restriction fragments

Vector 3.66 kb pET23b + NdeI +HindIII
Insert 0.635 Rv1411c + NdeI +HindIII
Other 4.3 kb linearized plasmid – NdeI, HindIII, BamHI, ClaI single digests

Gel description (file number, % agarose, buffer) kb16 notebook 2/1.0 % agarose/1XTAE

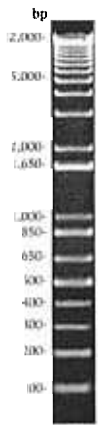
Molecular weight markers Invitrogen 1KB Plus, Invitrogen Supercoiled DNA Ladder

Left->right



← Rv1411c (-) signal peptide sequence

Ready-Load™
1 kb Plus DNA
Ladder 0.8 µg/lane



Left->right
pMRLB.43/BamHI
Supercoil ladder
pMRLB.43 uncut
pMRLB.43/ClaI
pMRLB.43/NdeI
pMRLB.43/HindIII
pMRLB.43/NdeI+HindIII
1 KB+ marker

Generated by Kerry Brooks Date 1-16-04
Supervisor John T. Bell Date 2-16-04

Form 4.2.03.JB