

Plasmid pMRLB.47 Containing Gene Rv1886c (Protein Ag85B) from *Mycobacterium tuberculosis*

Catalog No. NR-13298

This reagent is the tangible property of the U.S. Government.

Product Description: NR-13298 is a recombinant expression vector containing *Mycobacterium tuberculosis* gene Rv1886c, which is a precursor of the 85-B antigen, also referred to as a fibronectin-binding protein (FpbB), that is involved in cell wall mycoloylation. Gene Rv1886c was amplified by PCR and cloned into pET23b for expression in *Escherichia coli*.

Lot: 04.EC.12.01

Manufacturing Date: 01DEC2004

TEST	SPECIFICATIONS	RESULTS
Agarose Gel Electrophoresis (see attached QC Gel)¹ Linearization with <i>NdeI</i> Linearization with <i>HindIII</i> Linearization with <i>EcoRV</i> Digestion with <i>NdeI</i> , <i>HindIII</i>	~ 4.52 kb ~ 4.52 kb ~ 4.52 kb ~ 0.860 kb (insert); ~ 3.66 kb (vector)	~ 4.52 kb ~ 4.52 kb ~ 4.52 kb ~ 0.860 kb; ~ 3.66 kb
Concentration by OD₂₆₀	Report results	0.1 µg/µL
Absorbance Ratio (OD₂₆₀/OD₂₈₀)	Report results	1.9

¹Performed by Colorado State University under the TB Vaccine Testing and Research Materials Contract (NIH)

Date: 31 AUGUST 2009

Signature: Signature on File

Title: Technical Manager, BEI Authentication or designee

ATCC®, on behalf of BEI Resources, hereby represents and warrants that the material provided under this certificate has been subjected by the contractor to the tests and procedures specified and that the results described, along with any other data provided in this certificate, are true and accurate to the best of ATCC®'s knowledge.

ATCC® is a trademark of the American Type Culture Collection.

You are authorized to use this product for research use only. It is not intended for human use.



QC gel

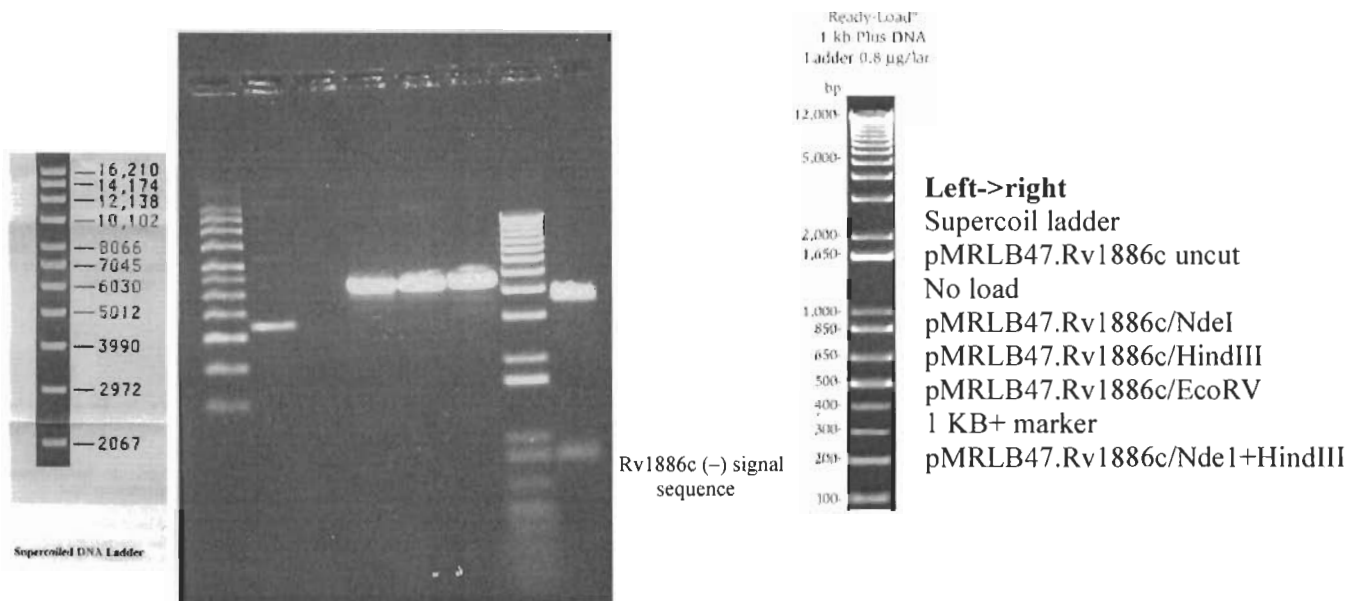
Restriction enzymes used in QC analysis:

NdeI & HindIII (cloning), EcoRV (insert diagnostic – 1 site in 1886c)

Expected size of restriction fragments

Vector 3.66 kb pET23b + NdeI +HindIII
Insert 0.860kb Rv1886c + NdeI +HindIII
Other 4.52 kb linearized plasmid – NdeI,HindIII,EcoRV single digests

Gel description (file number, % agarose, buffer) lmwRec1#7 pp49, 1%, 1X TAE
Molecular weight markers Invitrogen 1KB Plus, Invitrogen Supercoiled DNA Ladder



Generated by Lucretia Wolf Date 1/10/04
Supervisor Dr. T. Bell Date 2-6-05

Form 4.2.03.JB