

**Genomic DNA from *Bacillus anthracis*, Strain Ames35**

**Catalog No. NR-10450**

This reagent is the tangible property of the U.S. Government.

**Product Description:** Genomic DNA was isolated from a preparation of *Bacillus anthracis* (*B. anthracis*), strain Ames35. *B. anthracis*, strain Ames35 is a derivative of *B. anthracis*, strain Ames that was treated with novobiocin to cure it of the pXO2 plasmid.

**Lot<sup>1</sup>: 58485570**

**Manufacturing Date: 19MAR2009**

TEST	SPECIFICATIONS	RESULTS
<b>Sequencing of 16S Ribosomal RNA Gene (~ 1400 base pairs)</b>	Consistent with <i>B. cereus</i> group	Consistent with <i>B. cereus</i> group <sup>2</sup>
<b>Presence or Absence of Plasmids Confirmed by PCR Amplification</b> pXO1 ( <i>aat</i> ) pXO2 ( <i>at, capA, capB, capC</i> )	Positive Negative	Positive Negative
<b>Agarose Gel Electrophoresis</b>	High molecular weight chromosomal DNA	High molecular weight chromosomal DNA (Figure 1)
<b>Content by PicoGreen<sup>®</sup> Measurement</b>	4 to 6 µg in 25 to 100 µL per vial	5.5 µg in 54 µL per vial (101 µg/mL)
<b>Functional Activity by PCR Amplification</b> 16S ribosomal RNA gene Virulence markers on plasmid pXO1 ( <i>aat</i> )	~ 1500 bp amplicon ~ 125 bp amplicon	~ 1500 bp amplicon ~ 125 bp amplicon
<b>OD<sub>260</sub>/OD<sub>280</sub> Ratio</b>	1.7 to 1.9	1.8
<b>Bacterial Inactivation</b> 10% of total yield plated on Tryptic Soy Agar with 5% sheep blood <sup>3,4</sup>	No viable bacteria detected	No viable bacteria detected

<sup>1</sup>*B. anthracis*, strain Ames35 was deposited by Stephen Leppla, Laboratory of Bacterial Diseases, NIH/NIAID. The bacterial preparation used for extraction of genomic DNA was produced by Tryptic Soy Broth culture of the deposited material. After incubation for 24 hours at 37°C and aerobic atmosphere, genomic DNA was extracted using proprietary technology.

<sup>2</sup>*Bacillus cereus* group species (*B. cereus*, *B. thuringiensis*, *B. mycoides*, and *B. anthracis*) cannot be classified based on 16S sequence [Spencer, R. C. "*Bacillus anthracis*." *J. Clin. Pathol.* 56 (2003): 182-187. PubMed: 12610093].

<sup>3</sup>7 days at 37°C in an aerobic atmosphere

<sup>4</sup>An extraction procedure was used that has been shown to consistently inactivate 100% of Gram-negative bacteria.

**Date:** 10 AUG 2009

**Signature:** Signature on File

**Title:** Technical Manager, BEI Authentication or designee

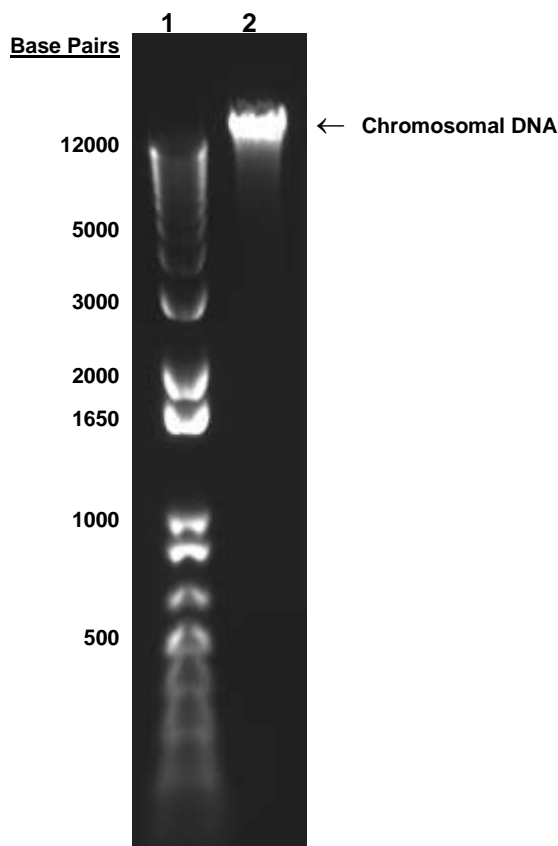
ATCC<sup>®</sup>, on behalf of BEI Resources, hereby represents and warrants that the material provided under this certificate has been subjected to the tests and procedures specified and that the results described, along with any other data provided in this certificate, are true and accurate to the best of ATCC<sup>®</sup>'s knowledge.

ATCC<sup>®</sup> is a trademark of the American Type Culture Collection.

You are authorized to use this product for research use only. It is not intended for human use.



**Figure 1**



Lane 1: Invitrogen™ TrackIt™ 1 Kb Plus DNA Ladder  
Lane 2: 200 ng of NR-10450