

Plasmid pMRLB.53 Containing Gene Rv1813c from *Mycobacterium tuberculosis*

Catalog No. NR-13303

This reagent is the tangible property of the U.S. Government.

Product Description: NR-13303 is a recombinant expression vector containing *Mycobacterium tuberculosis* gene Rv1813c. Gene Rv1813c was amplified by PCR and cloned into pET23b for expression in *Escherichia coli*.

Lot: 05.EC.11.29

Manufacturing Date: 29NOV2005

TEST	SPECIFICATIONS	RESULTS
Agarose Gel Electrophoresis (see attached QC Gel)¹ Linearization with <i>NdeI</i> Linearization with <i>XhoI</i> Digestion with <i>NdeI</i> and <i>XhoI</i>	~ 4.0 kb ~ 4.0 kb ~ 0.345 kb (insert); ~ 3.66 kb (vector)	Pending Pending Pending
Concentration by OD₂₆₀	Report results	0.06 µg/µL
Absorbance Ratio (OD₂₆₀/OD₂₈₀)	Report results	2.0

¹Performed by Colorado State University under the TB Vaccine Testing and Research Materials Contract (NIH)

Date: 31 AUGUST 2009

Signature: Signature on File

Title: Technical Manager, BEI Authentication or designee

ATCC®, on behalf of BEI Resources, hereby represents and warrants that the material provided under this certificate has been subjected by the contractor to the tests and procedures specified and that the results described, along with any other data provided in this certificate, are true and accurate to the best of ATCC®'s knowledge.

ATCC® is a trademark of the American Type Culture Collection.

You are authorized to use this product for research use only. It is not intended for human use.



QC gel

Restriction enzymes used in QC analysis:

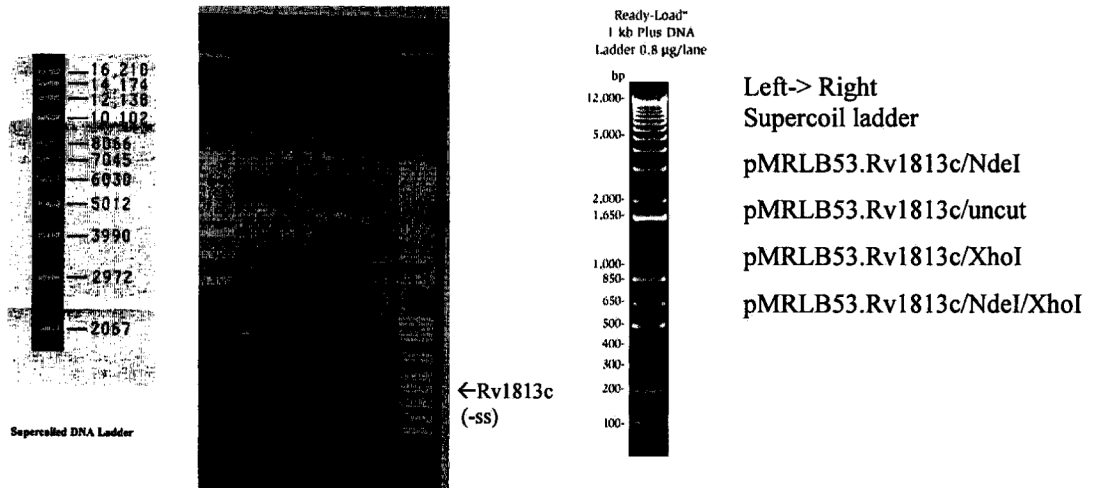
NdeI & XhoI (cloning)

Expected size of restriction fragments

Vector 3.66 kb pET23b + NdeI +XhoI
Insert 0.345 kb Rv1813c + NdeI +XhoI
Other 4.0 kb linearized plasmid – NdeI, XhoI single digests

Gel description (file number, % agarose, buffer) 1mwRec1 Rv1813c QC gel 2.0 % agarose/1XTAE

Molecular weight markers Invitrogen 1KB Plus, Invitrogen Supercoiled DNA Ladder



Generated by *Lori M. Way* Date 5/12/06
Supervisor _____ Date _____

Form 4.2.03.JB