

Plasmid pMRLB.46 Containing Gene Rv3874 (Protein Cfp10) from *Mycobacterium tuberculosis*

Catalog No. NR-13297

This reagent is the tangible property of the U.S. Government.

Product Description: NR-13297 is a recombinant expression vector containing *Mycobacterium tuberculosis* gene Rv3874, which encodes a 10 kDa culture filtrate protein, Cfp10. Gene Rv3874 was amplified by PCR and cloned into pET23b for expression in *Escherichia coli*.

Lot: 07.EC.02.06

Manufacturing Date: 06FEB2007

TEST	SPECIFICATIONS	RESULTS
Agarose Gel Electrophoresis (see attached QC Gel)¹ Linearization with <i>SacI</i> Linearization with <i>NdeI</i> Linearization with <i>HindIII</i> Digestion with <i>NdeI</i> and <i>HindIII</i>	~ 3.9 kb ~ 3.9 kb ~ 3.9 kb ~ 0.302 kb (insert); ~ 3.66 kb (vector)	Pending ~ 3.9 kb ~ 3.9 kb Pending; ~ 3.66 kb
Concentration by OD₂₆₀	Report results	0.05 µg/µL
Absorbance Ratio (OD₂₆₀/OD₂₈₀)	Report results	1.9

¹Performed by Colorado State University under the TB Vaccine Testing and Research Materials Contract (NIH)

Date: 31 AUGUST 2009

Signature: Signature on File

Title: Technical Manager, BEI Authentication or designee

ATCC®, on behalf of BEI Resources, hereby represents and warrants that the material provided under this certificate has been subjected by the contractor to the tests and procedures specified and that the results described, along with any other data provided in this certificate, are true and accurate to the best of ATCC®'s knowledge.

ATCC® is a trademark of the American Type Culture Collection.

You are authorized to use this product for research use only. It is not intended for human use.



QC gel

Restriction enzymes used in QC analysis NdeI, HindIII (cloning), SacII (insert diagnostic – 1 site in 3874)

Expected size of restriction fragments

- Vector 3.66 kb pET23b + NdeI + HindIII
- Insert 0.302 Rv3874 + NdeI + HindIII
- Other 3.90kb linearized plasmid –NdeI, HindIII, SacII single digests

Gel description (file number, % agarose, buffer) mfm/pMRLB46 pp8, 0.8%, TAE

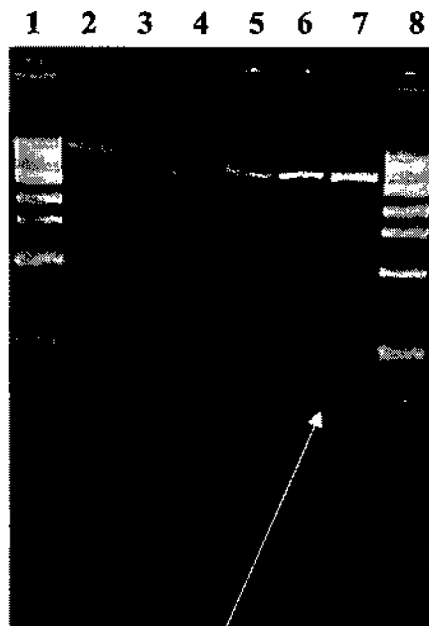
Molecular weight marker New England Biolabs 1kb DNA ladder

RE Digest and Gel:

Lane

- 1 NEB 1kb DNA ladder
- 2 Uncut plasmid
- 3 No load
- 4 SacII digest
- 5 NdeI digest
- 6 HindIII digest
- 7 NdeI + HindIII digest
- 8 NEB 1kb DNA ladder

Kilobases	DNA Mass (ng)
10.0	42
8.0	42
6.0	50
5.0	42
4.0	33
3.0	125
2.0	48
1.5	36
1.0	42
0.5	42



Rv3874 (-) signal sequence

*Verified in
NOTEBOOK
[Signature]*

Generated by Madeline Murray Date 3/20/07

[Signature] Date 3.20.07

Supervisor [Signature] Date 3/20/2007