

Genomic DNA from *Burkholderia thailandensis*, Strain E426

Catalog No. NR-10276

Product Description: Genomic DNA was isolated from a preparation of *Burkholderia thailandensis* (*B. thailandensis*), strain E426 an environmental isolate obtained from a rice field sample in northeast Thailand.

Lot¹: 58243182

Manufacturing Date: 08JAN2009

TEST	SPECIFICATIONS	RESULTS
Sequencing of 16S Ribosomal RNA Gene (~ 1380 bp)	Identical to BEI Resources NR-9908 Consistent with <i>B. thailandensis</i>	Identical to BEI Resources NR-9908 Consistent with <i>B. thailandensis</i>
Agarose Gel Electrophoresis	High molecular weight chromosomal DNA	High molecular weight chromosomal DNA (Figure 1)
Concentration by PicoGreen[®] Measurement	4 to 6 µg in 25 to 100 µL per vial	5.0 µg in 42 µL per vial (119 µg/mL)
Functional Activity by PCR Amplification 16S ribosomal RNA gene	~ 1500 bp amplicon	~ 1500 bp amplicon
OD₂₆₀/OD₂₈₀ Ratio	1.7 to 1.9	1.8
Bacterial Inactivation 10% of total yield plated on Nutrient Agar ^{2,3}	No viable bacteria detected	No viable bacteria detected

¹*B. thailandensis*, strain E426 was deposited by Dr. Sharon J. Peacock, PhD, FRPC, FRCPath, Head of Microbiology, Mahidol-Oxford Tropical Medicine Research Unit, Faculty of Tropical Medicine, Mahidol University, Bangkok, Thailand. The bacterial preparation used for extraction of genomic DNA was produced by Nutrient Broth culture of the deposited material. After incubation for 48 hours at 30°C in an aerobic atmosphere, genomic DNA was extracted using proprietary technology.

²7 days at 37°C in an aerobic atmosphere

³An extraction procedure was used that has been shown to consistently inactivate 100% of Gram-negative bacteria.

Date: 26 OCT 2009

Signature: Signature on File

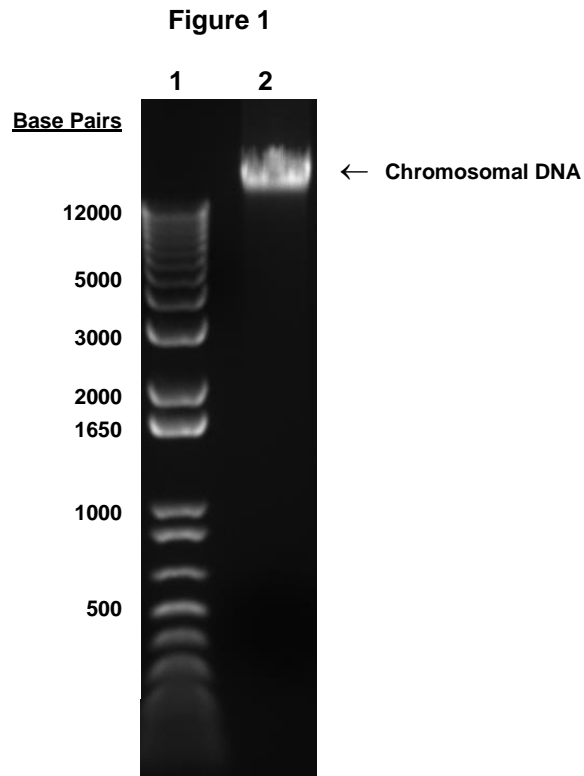
Title: Technical Manager, BEI Authentication or designee

ATCC[®], on behalf of BEI Resources, hereby represents and warrants that the material provided under this certificate has been subjected to the tests and procedures specified and that the results described, along with any other data provided in this certificate, are true and accurate to the best of ATCC[®]'s knowledge.

ATCC[®] is a trademark of the American Type Culture Collection.

You are authorized to use this product for research use only. It is not intended for human use.





Lane 1: Invitrogen™ TrackIt™ 1 Kb Plus DNA Ladder
Lane 2: 200 ng of NR-10276