

**Plasmid pMRLB.70 Containing Gene Rv0164 (Protein TB18.5) from *Mycobacterium tuberculosis***

**Catalog No. NR-13316**

This reagent is the tangible property of the U.S. Government.

**Product Description:** NR-13316 is a recombinant expression vector containing *Mycobacterium tuberculosis* gene Rv0164, which encodes a conserved hypothetical protein, TB18.5. Gene Rv0164 was amplified by PCR and cloned into pDEST17 for expression in *Escherichia coli*.

**Lot: 08.EC.8.13**

**Manufacturing Date: 13AUG2008**

TEST	SPECIFICATIONS	RESULTS
<b>Agarose Gel Electrophoresis (see attached QC Gel)<sup>1</sup></b> Linearization with <i>NdeI</i> Linearization with <i>HindIII</i> Digestion with <i>NdeI</i> and <i>HindIII</i>	~ 6.84 kb ~ 6.5 kb ~ 0.486 kb (insert); ~ 6.35 kb (vector)	Pending Pending ~ 0.486 kb; Pending
<b>Concentration by OD<sub>260</sub></b>	Report results	0.03 µg/µL
<b>Absorbance Ratio (OD<sub>260</sub>/OD<sub>280</sub>)</b>	Report results	1.9

<sup>1</sup>Performed by Colorado State University under the TB Vaccine Testing and Research Materials Contract (NIH)

**Date:** 31 AUG 2009

**Signature:** Signature on File

**Title:** Technical Manager, BEI Authentication or designee

ATCC®, on behalf of BEI Resources, hereby represents and warrants that the material provided under this certificate has been subjected by the contractor to the tests and procedures specified and that the results described, along with any other data provided in this certificate, are true and accurate to the best of ATCC®'s knowledge.

ATCC® is a trademark of the American Type Culture Collection.

You are authorized to use this product for research use only. It is not intended for human use.



QC gel

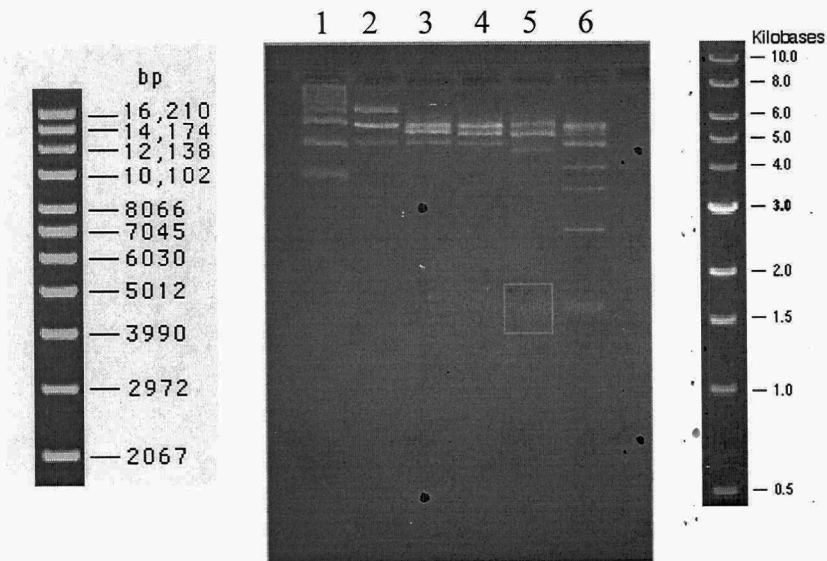
Restriction enzymes used in QC analysis:

NdeI & HindIII

Expected size of restriction fragments

Vector 6.35 kb pDEST17 + NdeI +HindIII  
Insert 0.435 kb Rv0164 + NdeI +HindIII  
Other 6.79 kb linearized plasmid – NdeI, HindIII single digests

Gel description (file number, % agarose, buffer) mmcontract1 pp100, 2%, 1X TAE  
Molecular weight markers Invitrogen supercoiled DNA ladder, NEB 1kb DNA ladder



Left → Right:

- 1) Invitrogen supercoiled DNA ladde
- 2) pMRLB70.Rv0164 uncut
- 3) pMRLB70.Rv0164/NdeI
- 4) pMRLB70.Rv0164/HindIII
- 5) pMRLB70.Rv0164/NdeI + HindIII
- 6) NEB 1kb DNA ladder

Revised  
Generated by Brian J. Thompson Date 08/19/09  
Supervisor [Signature] Date 08/19/2009