

**Monoclonal Anti-*Mycobacterium tuberculosis* LAM (produced *in vitro*)****Catalog No. NR-13812**

This reagent is the tangible property of the U.S. Government.

**Product Description:**

Antibody Class: IgG<sub>1</sub>

Antibody Designation: CS-40

Monoclonal antibody to *Mycobacterium tuberculosis*, strain H37Rv lipoarabinomannan (LAM) was produced in cell culture using a B cell hybridoma generated by the fusion of myeloma cells with immunized mouse splenocytes.

**Lot: 08.CS.40.2.5.LAM.mm****Manufacturing Date: 05FEB2008**

QC testing was performed by Colorado State University under the TB Vaccine Testing and Research Materials Contract (NIH). The Colorado State University documentation is attached.

ATCC<sup>®</sup>, on behalf of BEI Resources, hereby represents and warrants that the material provided under this certificate has been subjected by the contractor to the tests and procedures specified and that the results described, along with any other data provided in this certificate, are true and accurate to the best of ATCC<sup>®</sup>'s knowledge.

ATCC<sup>®</sup> is a trademark of the American Type Culture Collection.

You are authorized to use this product for research use only. It is not intended for human use.



# TB Contract Antibody QC Sheet

## General Information:

Product: Monoclonal against Lipoarabinomannan  
Lot Number: 08.CS.40.2.5.LAM.mm  
Species: *Mycobacterium tuberculosis*  
Strain: H37Rv  
Type: Culture Supernatant

## Production Information:

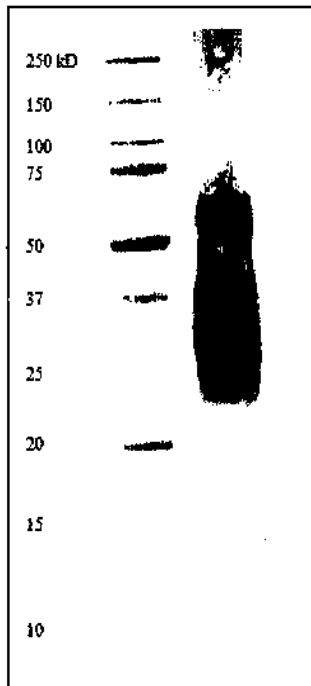
Cell Line: \_\_\_\_\_ SOP#: 100 Notebook/pp: JHM Ab #1, 1-3,48  
Amount of CS Harvested: 50 mL Clarity: clear  
IgG Purification: \_\_\_\_\_ SOP#: \_\_\_\_\_ Notebook/pp: \_\_\_\_\_, \_\_\_\_\_

## QC Information:

Tested Against: LAM SOP#: \_\_\_\_\_ Notebook/pp: KEE TB #2, 37  
Titer: 1:20 Western blot: X ELISA: \_\_\_\_\_

## Special Instructions:

### QC Western blot:



Aliquot Information: 48 x 1 mL aliquots

Katzenberg 2/5/2008  
Research/Associate / Date

[Signature] 2/5/2008  
Lab Supervisor / Date