

**Genomic RNA from Dengue Virus Type 1, TH-Sman**

**Catalog No. NR-2768**

**Product Description:** Genomic RNA was isolated from a preparation of cell lysate and supernatant from African green monkey (Vero) cells<sup>1</sup> infected with dengue virus type 1 (DEN-1), TH-Sman. RT-PCR amplification of a sequence of approximately 1200 nucleotides was successful with dilutions of up to 10-fold for this lot of NR-2768.

**Lot<sup>2</sup>: 57835415**

**Manufacturing Date: 19AUG2009**

TEST	SPECIFICATIONS	RESULTS
<b>Sequencing of DEN-1 Specific Sequence (975 nucleotides)</b>	Consistent with DEN-1	Consistent with DEN-1
<b>Functional Activity by RT-PCR Amplification<sup>3</sup></b>	~ 1200 bp amplicon	~ 1200 bp amplicon (see Figure 1)
<b>Total RNA Content by RiboGreen<sup>®</sup> Measurement (Viral, Cellular, and Carrier)</b>	Report results	456 ng per 100 µL
<b>Virus Inactivation</b> 10% of total yield inoculated on Vero cells and evaluated for immunofluorescence <sup>1,4</sup>	No viable virus detected	No viable virus detected
<b>Sodium Azide Content</b>	Report results	0.004%

<sup>1</sup>Vero cells: ATCC<sup>®</sup> CCL-81™

<sup>2</sup>Nucleic acid was extracted from a preparation of DEN-1, TH-Sman using a QIAGEN QIAamp<sup>®</sup> Viral RNA Mini Kit.

<sup>3</sup>Amplified using a 1:10 dilution of NR-2768 and a QIAGEN One-Step RT-PCR Kit (210212)

<sup>4</sup>This extraction procedure has been shown to consistently inactivate 100% of dengue viruses using a number of methods designed to detect the virus in cells: 1) cytopathic effect (100% plating, 10% plating, blind passage sub-culturing) and 2) indirect immunofluorescence of viral antigens.

**Date:** 19 FEB 2010

**Signature:** Signature on File

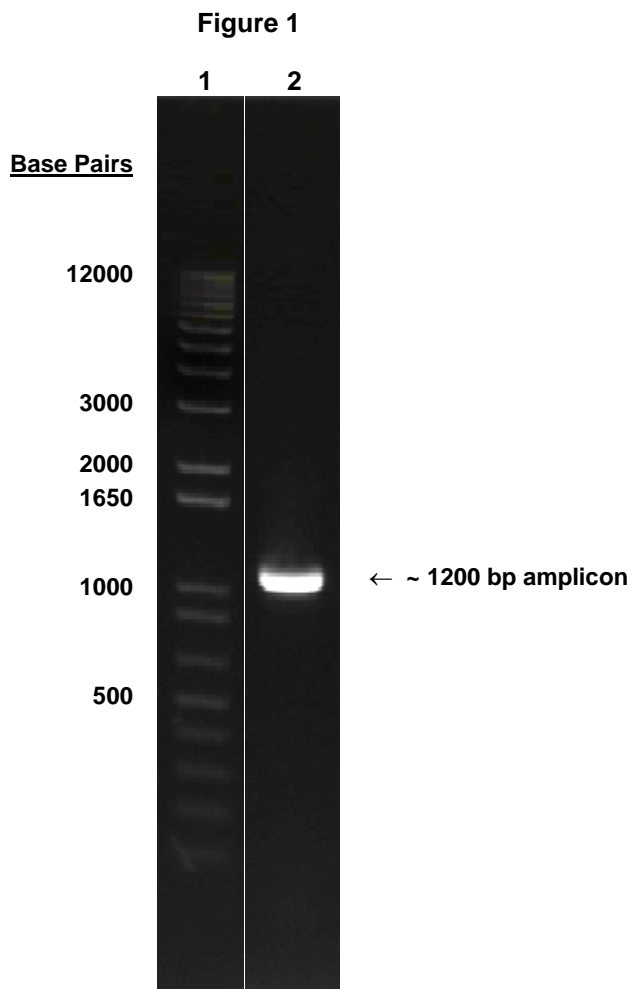
**Title:** Technical Manager, BEI Authentication or designee

ATCC<sup>®</sup>, on behalf of BEI Resources, hereby represents and warrants that the material provided under this certificate has been subjected to the tests and procedures specified and that the results described, along with any other data provided in this certificate, are true and accurate to the best of ATCC<sup>®</sup>'s knowledge.

ATCC<sup>®</sup> is a trademark of the American Type Culture Collection.

You are authorized to use this product for research use only. It is not intended for human use.





Lane 1: Invitrogen™ TrackIt™ 1 Kb Plus DNA Ladder  
Lane 2: 10-fold dilution of NR-2768