

**Monoclonal Anti-*Mycobacterium tuberculosis* LpqH (Gene Rv3763), Clone IT-19 (TB23)  
(produced *in vitro*)****Catalog No. NR-13606**

This reagent is the tangible property of the U.S. Government.

**Product Description:**

Antibody Class: IgG<sub>1</sub>

Antibody Designation: IT-19 (TB23)

Monoclonal antibody to *Mycobacterium tuberculosis*, strain H37Rv 19 kDa lipoprotein (LpqH) was produced in cell culture using a B cell hybridoma generated by the fusion of myeloma cells with immunized mouse splenocytes.

**Lot: 08.IT.19.5.1.19kDa.mm****Manufacturing Date: 01MAY2008**

QC testing was performed by Colorado State University under the TB Vaccine Testing and Research Materials Contract (NIH). The Colorado State University documentation is attached.

ATCC<sup>®</sup>, on behalf of BEI Resources, hereby represents and warrants that the material provided under this certificate has been subjected by the contractor to the tests and procedures specified and that the results described, along with any other data provided in this certificate, are true and accurate to the best of ATCC<sup>®</sup>'s knowledge.

ATCC<sup>®</sup> is a trademark of the American Type Culture Collection.

You are authorized to use this product for research use only. It is not intended for human use.



# TB Contract Antibody QC Sheet

## General Information:

Product: Monoclonal antibody against 19kDa protein (Rv3763)  
Lot Number: 08.IT.19.5.1.19kDa.mm  
Species: *Mycobacterium tuberculosis*  
Strain: H37Rv  
Type: Culture Supernatant

## Production Information:

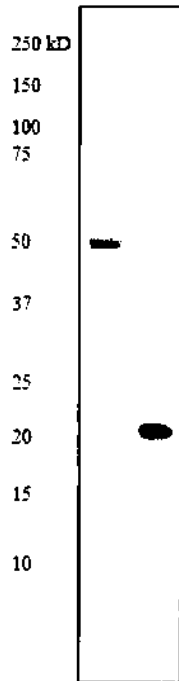
Cell Line: \_\_\_\_\_ SOP#: \_\_\_\_\_ Notebook/pp: \_\_\_\_\_  
Amount of CS Harvested: \_\_\_\_\_ Clarity: \_\_\_\_\_  
IgG Purification: \_\_\_\_\_ SOP#: \_\_\_\_\_ Notebook/pp: \_\_\_\_\_

## QC Information:

Tested Against: 1µg Cytosol SOP#: 102 Notebook/pp: KEE 2, p. 87  
Titer: 1:40 Western Blot: X ELISA:

## Special Instructions:

### QC Western Blot:



Aliquot Information: 95 x 0.5mL

Kittassey 6/1/2008  
Research Associate/ Date

[Signature] 5/2/2008  
Lab Supervisor/ Date