

Genomic DNA from *Bacillus thuringiensis* subsp. *konkukian*, Strain 97-27

Catalog No. NR-12315

Product Description: Genomic DNA was isolated from a preparation of *Bacillus thuringiensis* (*B. thuringiensis*) subsp. *konkukian*, strain 97-27, (serotype H34).

Lot¹: 58659248

Manufacturing Date: 04JUN2009

TEST	SPECIFICATIONS	RESULTS
Sequencing of 16S Ribosomal RNA Gene (~ 1300 base pairs)	Identical to BEI Resources NR-12265 Consistent with <i>B. cereus</i> group	Identical to BEI Resources NR-12265 Consistent with <i>B. cereus</i> group ²
Agarose Gel Electrophoresis	High molecular weight chromosomal DNA	High molecular weight chromosomal DNA (Figure 1)
Content by PicoGreen[®] Measurement	4 to 6 µg in 25 to 100 µL per vial	5.6 µg in 26 µL per vial (221 µg/mL)
Functional Activity by PCR Amplification 16S ribosomal RNA gene	~ 1500 bp amplicon	~ 1500 bp amplicon
OD₂₆₀/OD₂₈₀ Ratio	1.7 to 1.9	1.8
Bacterial Inactivation 10% of total yield plated on Tryptic Soy Agar ^{3,4}	No viable bacteria detected	No viable bacteria detected

¹The bacterial preparation used for the extraction of genomic DNA was produced by inoculation of the deposited material into Tryptic Soy Broth. After incubation for 24 hours at 37°C and aerobic atmosphere, genomic DNA was extracted using proprietary technology.

²*Bacillus cereus* group species (*B. cereus*, *B. thuringiensis*, *B. mycooides*, and *B. anthracis*) cannot be classified based on 16S sequence [Spencer, R. C. "Bacillus anthracis." *J. Clin. Pathol.* 56 (2003): 182-187. PubMed: 12610093].

³7 days at 37°C in an aerobic atmosphere

⁴An extraction procedure was used that has been shown to consistently inactivate 100% of Gram-negative bacteria.

Date: 18 MAR 2010

Signature: Signature on File

Title: Technical Manager, BEI Authentication or designee

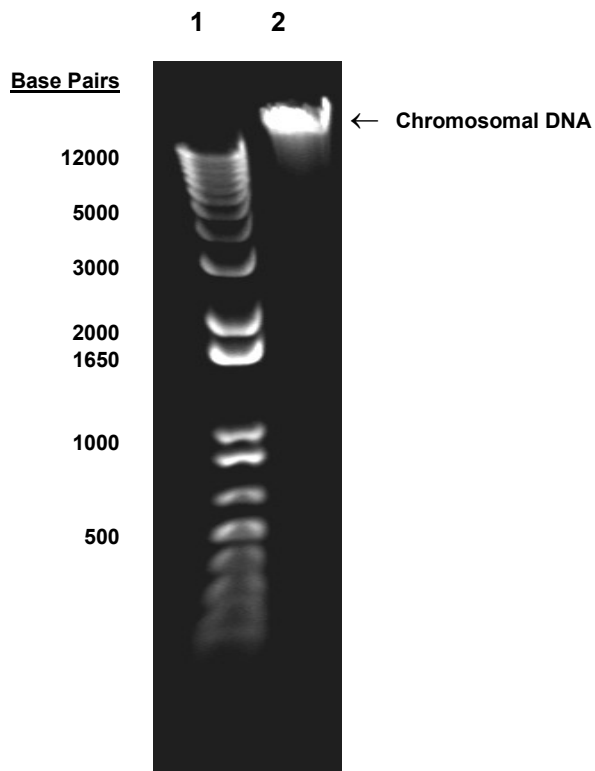
ATCC[®], on behalf of BEI Resources, hereby represents and warrants that the material provided under this certificate has been subjected to the tests and procedures specified and that the results described, along with any other data provided in this certificate, are true and accurate to the best of ATCC[®]'s knowledge.

ATCC[®] is a trademark of the American Type Culture Collection.

You are authorized to use this product for research use only. It is not intended for human use.



Figure 1



Lane 1: Invitrogen™ TrackIt™ 1 Kb Plus DNA Ladder
Lane 2: 200 ng of NR-12315