

***Bacillus thuringiensis* subsp. *konkukian*, Strain 97-27**

Catalog No. NR-12265

Product Description: *Bacillus thuringiensis* (*B. thuringiensis*) subsp. *konkukian*, strain 97-27 was isolated in 1995 from the wound of a healthy 28-year-old French soldier who was injured by a land mine explosion in the former Yugoslavia.

Lot¹: 58582637

Manufacturing Date: 15APR2009

TEST	SPECIFICATIONS	RESULTS
Phenotypic Analysis Cellular morphology Colony morphology ² Sporulation Motility β-Hemolytic Capsule (India ink staining) Tenacious Biochemical Analyses: Nitrate reduction Analytical profile index (API [®] 50 CHB including API [®] 20E; ONPG to GEL only) FAME analysis	Gram-positive rod Report results Positive Motile Report results Positive Report results Positive Consistent with <i>B. cereus</i> group Consistent with <i>B. thuringiensis</i>	Gram-positive rod Circular, low convex, ground glass opaque and cream (Figure 1) Positive Motile Positive Positive Negative Positive Consistent with <i>B. cereus</i> group ^{3,4} Consistent with <i>B. thuringiensis</i> ⁵
Genotypic Analysis Sequencing of 16S ribosomal RNA gene (~ 1300 bp)	Consistent with <i>B. thuringiensis</i>	Consistent with <i>B. thuringiensis</i> ⁶
Viability (post-vialing)²	Growth	Growth

¹*B. thuringiensis* subsp. *konkukian*, strain 97-27 was deposited by Paul J. Jackson, Ph.D., Biosciences and Biotechnology Division, Lawrence Livermore National Laboratory. NR-12265 was produced by inoculation of the deposited material into Tryptic Soy Broth and grown 24 hours at 37°C. Broth inoculum was added to Kolles which were grown 24 hours at 37°C to produce this lot.

²24 hours at 37°C on Tryptic Soy Agar

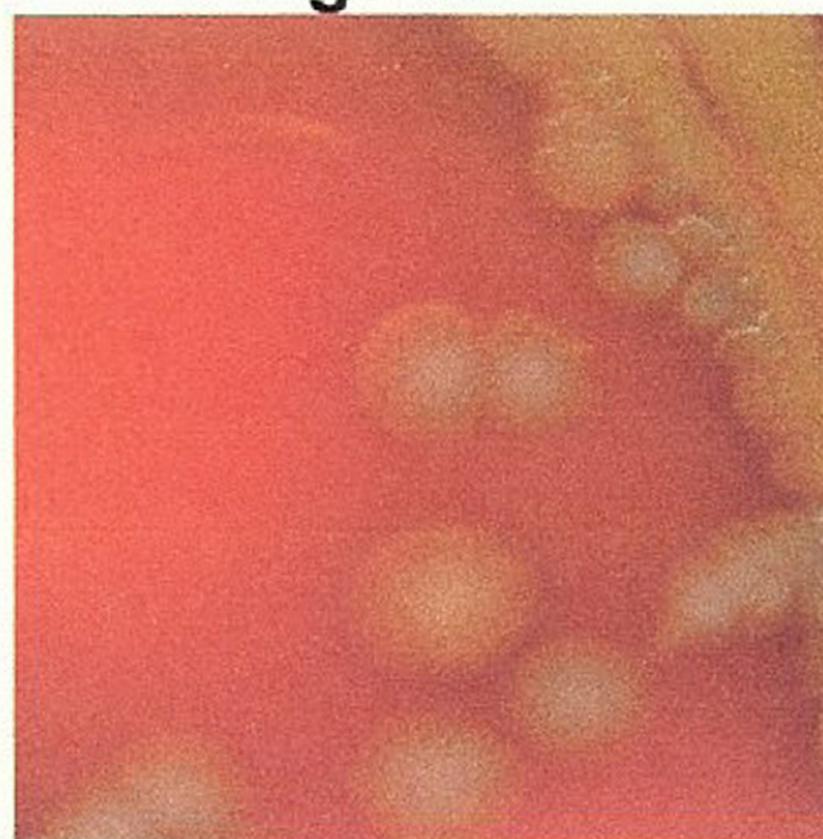
³*B. cereus* group species (*B. cereus*, *B. thuringiensis*, *B. mycooides*, and *B. anthracis*)

⁴For the *B. cereus* group, API[®] 50 CHB may not be sufficiently discriminative [Valero, M., et al. "Characterization of *Bacillus cereus* Isolates from Fresh Vegetables and Refrigerated Minimally Processed Foods by Biochemical and Physiological Tests." *Food Microbiology* 19 (2002): 491-499].

⁵Also consistent with *B. cereus* and *B. mycooides*

⁶Also consistent with *B. cereus* group species which cannot be classified based on 16S sequence [Spencer, R. C. "*Bacillus anthracis*." *J. Clin. Pathol.* 56 (2003): 182-187. PubMed: 12610093].

Figure 1



Date: March 12, 2010 Signature: 

Title: Technical Manager, BEI Authentication or designee

ATCC[®], on behalf of BEI Resources, hereby represents and warrants that the material provided under this certificate has been subjected to the tests and procedures specified and that the results described, along with any other data provided in this certificate, are true and accurate to the best of ATCC[®]'s knowledge.

ATCC[®] is a trademark of the American Type Culture Collection.
You are authorized to use this product for research use only. It is not intended for human use.

