

***Staphylococcus aureus*, Strain TCH60**

**Catalog No. NR-10129**

**Product Description:** *Staphylococcus aureus* (*S. aureus*), strain TCH60 was isolated from a human and is a methicillin-resistant *S. aureus* (MRSA) strain.

**Lot<sup>1</sup>: 58954253**

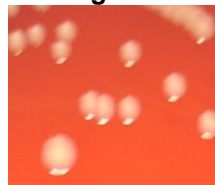
**Manufacturing Date: 04DEC2009**

TEST	SPECIFICATIONS	RESULTS
<b>Phenotypic Analysis</b> Cellular morphology <sup>2</sup> Colony morphology <sup>2</sup>  Oxacillin resistance Hemolysis on blood agar Biochemical Analyses Analytical profile index (API Staph <sup>®</sup> ) Catalase	Gram-positive cocci Report results  Resistant Positive  Consistent with <i>S. aureus</i> Positive	Gram-positive cocci Circular, flat, entire, opaque and cream (Figure 1) Resistant Positive  Consistent with <i>S. aureus</i> Positive
<b>Genotypic Analysis</b> Sequencing of 16S ribosomal RNA gene (1400 bp) Ribotyping	Consistent with <i>S. aureus</i> Consistent with <i>S. aureus</i>	Consistent with <i>S. aureus</i> Consistent with <i>S. aureus</i>
<b>PCR Assay of Extracted DNA</b> 16S ribosomal RNA gene	~ 1500 bp amplicon	~ 1500 bp amplicon
<b>Viability (post-freeze)<sup>2</sup></b>	Growth	Growth

<sup>1</sup>*S. aureus*, strain TCH60 was deposited by Kristina Hultén, Assistant Professor, Pediatrics, Infectious Diseases Section Baylor College of Medicine Houston, TX. NR-10129 was produced by inoculation of the deposited material into Brain Heart Infusion Broth (BD 237500) and grown 24 hours at 37°C. Broth inoculum was added to Kolles which were grown 24 hours at 37°C to produce this lot.

<sup>2</sup>24 hours at 37°C and aerobic atmosphere on Tryptic Soy Agar with 5% sheep's blood

**Figure 1**



**Date:** 12 MAY 2010

**Signature:** Signature on File

**Title:** Technical Manager, BEI Authentication or designee

ATCC<sup>®</sup>, on behalf of BEI Resources, hereby represents and warrants that the material provided under this certificate has been subjected to the tests and procedures specified and that the results described, along with any other data provided in this certificate, are true and accurate to the best of ATCC<sup>®</sup>'s knowledge.

ATCC<sup>®</sup> is a trademark of the American Type Culture Collection.

You are authorized to use this product for research use only. It is not intended for human use.

