

Genomic DNA from *Acinetobacter baumannii*, Isolate 3

Catalog No. NR-13513

Product Description: Genomic DNA was obtained from a preparation of *Acinetobacter baumannii* (*A. baumannii*) that was isolated from human sputum (induced) in 2008.

Lot¹: 58666826

Manufacturing Date: 09OCT2009

| TEST | SPECIFICATIONS | RESULTS |
|---|---------------------------------------|--|
| Sequencing of 16S Ribosomal RNA Gene (~ 1440 bp) | Consistent with <i>A. baumannii</i> | Consistent with <i>A. baumannii</i> |
| Agarose Gel Electrophoresis | High molecular weight chromosomal DNA | High molecular weight chromosomal DNA (Figure 1) |
| Concentration by PicoGreen[®] Measurement | 4 to 6 µg in 25 to 100 µL per vial | 5.5 µg in 37 µL per vial (148 µg/mL) |
| Functional Activity by PCR Amplification 16S ribosomal RNA gene | ~ 1500 bp amplicon | ~ 1500 bp amplicon |
| OD₂₆₀/OD₂₈₀ Ratio | 1.7 to 1.9 | 1.8 |
| Bacterial Inactivation 10% of total yield plated on Tryptic Soy Agar with 5% sheep blood ^{2,3} | No viable bacteria detected | No viable bacteria detected |

¹The bacterial preparation used for extraction of genomic DNA was produced by Tryptic Soy Broth culture of the deposited material. After incubation for 24 hours at 37°C and aerobic atmosphere, genomic DNA was extracted using proprietary technology.

²7 days at 37°C in an aerobic atmosphere

³An extraction procedure was used that has been shown to consistently inactivate 100% of Gram-negative bacteria.

Date: 21 MAY 2010

Signature: Signature on File

Title: Technical Manager, BEI Authentication or designee

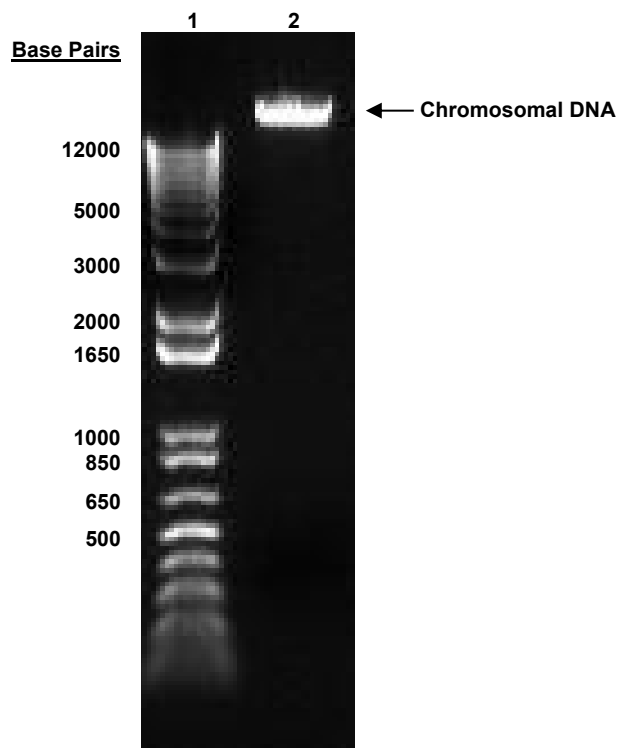
ATCC[®], on behalf of BEI Resources, hereby represents and warrants that the material provided under this certificate has been subjected to the tests and procedures specified and that the results described, along with any other data provided in this certificate, are true and accurate to the best of ATCC[®]'s knowledge.

ATCC[®] is a trademark of the American Type Culture Collection.

You are authorized to use this product for research use only. It is not intended for human use.



Figure 1



Lane 1: Invitrogen™ TrackIt 1 Kb Plus DNA Ladder™
Lane 2: 200 ng of NR-13513