

**Genomic DNA from *Lactobacillus reuteri*, Strain CF48-3A**

**Catalog No. HM-102D**

**Product Description:** Genomic DNA was obtained from a preparation of *Lactobacillus reuteri* (*L. reuteri*), strain CF48-3A.

**Lot<sup>1</sup>: 59118603**

**Manufacturing Date: 12MAR2010**

TEST	SPECIFICATIONS	RESULTS
<b>Sequencing of 16S Ribosomal RNA Gene (~ 1440 bp)</b>	Identical to BEI Resources HM-102 Consistent with <i>L. reuteri</i>	Identical to BEI Resources HM-102 Consistent with <i>L. reuteri</i>
<b>Agarose Gel Electrophoresis</b>	High molecular weight chromosomal DNA	High molecular weight chromosomal DNA (Figure 1)
<b>Concentration by PicoGreen<sup>®</sup> Measurement</b>	0.7 to 1.25 µg in 25 to 100 µL per vial	1.0 µg in 53 µL per vial (19 µg/mL)
<b>Functional Activity by PCR Amplification</b> 16S ribosomal RNA gene	~ 1500 bp amplicon	~ 1500 bp amplicon
<b>OD<sub>260</sub>/OD<sub>280</sub> Ratio</b>	1.7 to 1.9	1.8
<b>Bacterial Inactivation</b> 10% of total yield plated on Lactobacilli MRS Agar <sup>2,3</sup>	No viable bacteria detected	No viable bacteria detected

<sup>1</sup>The bacterial preparation used for extraction of genomic DNA was produced by Lactobacilli MRS Broth culture of the deposited material. After incubation for 24 hours at 37°C and aerobic atmosphere, genomic DNA was extracted using proprietary technology.

<sup>2</sup>7 days at 37°C in an aerobic atmosphere

<sup>3</sup>An extraction procedure was used that has been shown to consistently inactivate 100% of Gram-positive and Gram-negative bacteria.

**Date:** 07JUN2010

**Signature:** Signature on File

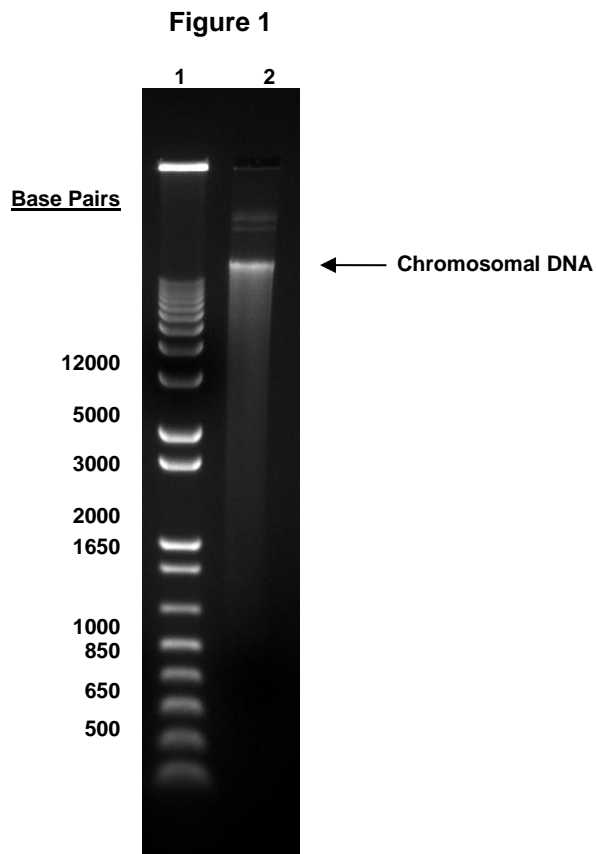
**Title:** Technical Manager, BEI Authentication or designee

ATCC<sup>®</sup>, on behalf of BEI Resources, hereby represents and warrants that the material provided under this certificate has been subjected by ATCC<sup>®</sup> to the tests and procedures specified and that the results described, along with any other data provided in this certificate, are true and accurate to the best of ATCC<sup>®</sup>'s knowledge.

ATCC<sup>®</sup> is a trademark of the American Type Culture Collection.

You are authorized to use this product for research use only. It is not intended for human use.





Lane 1: Invitrogen™ TrackIt 1 Kb Plus DNA Ladder™  
Lane 2: 200 ng of HM-102D