

Genomic DNA from *Staphylococcus aureus*, Strain MN8

Catalog No. HM-162D

Product Description: Genomic DNA was obtained from a preparation of *Staphylococcus aureus* (*S. aureus*), strain MN8 was isolated from the vagina of a toxic shock syndrome patient.

Lot¹: 58954323

Manufacturing Date: 05JAN2010

TEST	SPECIFICATIONS	RESULTS
Sequencing of 16S Ribosomal RNA Gene (~ 1220 bp)	Identical to BEI Resources HM-162 Consistent with <i>S. aureus</i>	Identical to BEI Resources HM-162 Consistent with <i>S. aureus</i>
Agarose Gel Electrophoresis	High molecular weight chromosomal DNA	High molecular weight chromosomal DNA (Figure 1)
Concentration by PicoGreen[®] Measurement	0.7 to 1.5 µg in 25 to 100 µL per vial	1.1 µg in 37 µL per vial (29 µg/mL)
Functional Activity by PCR Amplification 16S ribosomal RNA gene	~ 1500 bp amplicon	~ 1500 bp amplicon
OD₂₆₀/OD₂₈₀ Ratio	1.7 to 1.9	1.7
Bacterial Inactivation 10% of total yield plated on Tryptic Soy Agar with 5% defibrinated sheep blood ^{2,3}	No viable bacteria detected	No viable bacteria detected

¹The bacterial preparation used for extraction of genomic DNA was produced by Tryptic Soy Broth culture of the deposited material. After incubation for 24 hours at 37°C and aerobic atmosphere, genomic DNA was extracted using proprietary technology.

²7 days at 37°C in an aerobic atmosphere

³An extraction procedure was used that has been shown to consistently inactivate 100% of Gram-negative bacteria and Gram-positive bacteria.

Date: 08 JUN 2010

Signature: Signature on file

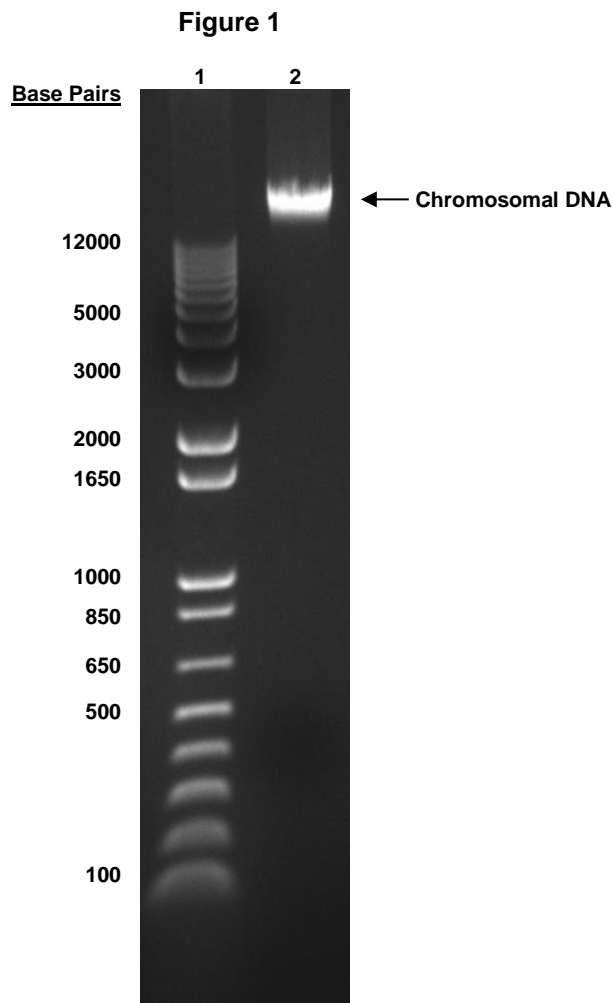
Title: Technical Manager, BEI Authentication or designee

ATCC[®], on behalf of BEI Resources, hereby represents and warrants that the material provided under this certificate has been subjected by ATCC[®] to the tests and procedures specified and that the results described, along with any other data provided in this certificate, are true and accurate to the best of ATCC[®]'s knowledge.

ATCC[®] is a trademark of the American Type Culture Collection.

You are authorized to use this product for research use only. It is not intended for human use.





Lane 1: Invitrogen™ TrackIt 1 Kb Plus DNA Ladder™
Lane 2: 200 ng of HM-162D