

***Staphylococcus aureus*, Strain MN8**

Catalog No. HM-162

Product Description: *Staphylococcus aureus* (*S. aureus*), strain MN8 was isolated from the vagina of a toxic shock syndrome patient.

Lot¹: 58954305

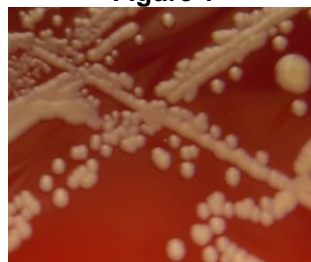
Manufacturing Date: 04DEC2009

TEST	SPECIFICATIONS	RESULTS
Phenotypic Analysis Cellular morphology Colony morphology ² Oxacillin resistance Hemolysis on blood agar Biochemical Analyses Analytical profile index (API Staph [®]) Catalase	Gram-positive cocci Report results Sensitive Report results Consistent with <i>S. aureus</i> Positive	Gram-positive cocci Circular, low convex, entire and cream (Figure 1) Sensitive Positive Consistent with <i>S. aureus</i> Positive
Genotypic Analysis Sequencing of 16S ribosomal RNA gene (~ 1220 bp) Riboprinter [®] Microbial Characterization System	Consistent with <i>S. aureus</i> Consistent with <i>S. aureus</i>	Consistent with <i>S. aureus</i> Consistent with <i>S. aureus</i>
PCR Assay of Extracted DNA 16S ribosomal RNA gene	~ 1500 bp amplicon	~ 1500 bp amplicon
Viability (post-freeze)²	Growth	Growth

¹*S. aureus*, strain MN8 was deposited by Kimberly Nemeth, Ph.D., Regulatory Affairs Manager, Product Safety & Regulatory Affairs, The Proctor & Gamble Company, Cincinnati, Ohio. HM-162 was produced by inoculation of the deposited material into Brain Heart Infusion Broth (BD 237500) and grown 24 hours at 37°C. Broth inoculum was added to Kolles which were grown 24 hours at 37°C to produce this lot.

²24 hours at 37°C and aerobic atmosphere on Tryptic Soy Agar with 5% sheep blood

Figure 1



Date: 08 JUN 2010

Signature: Signature on file

Title: Technical Manager, BEI Authentication or designee

ATCC[®], on behalf of BEI Resources, hereby represents and warrants that the material provided under this certificate has been subjected by ATCC[®] to the tests and procedures specified and that the results described, along with any other data provided in this certificate, are true and accurate to the best of ATCC[®]'s knowledge.

ATCC[®] is a trademark of the American Type Culture Collection.
 You are authorized to use this product for research use only. It is not intended for human use.

