

Monoclonal Anti-Cotton Rat Light Chain, Clone SealyCRLC-10G4 (produced *in vitro*)

Catalog No. NR-13666

This reagent is the tangible property of the U.S. Government.

Product Description:

Antibody Class: IgG2b.κ

Antibody Designation: SealyCRLC-10G4

Monoclonal antibody to the cotton rat light chain was produced in cell culture using a B cell hybridoma generated by the fusion of X63-Ag8.653 myeloma cells with immunized mouse splenocytes. The monoclonal antibody was purified by protein G sepharose chromatography from the hybridoma supernatant.

Lot: 58681205

Manufacturing Date: 2009

| TEST | SPECIFICATIONS | RESULTS |
|--|--|--|
| Antibody Class | Report results | IgG2b.κ |
| Concentration by Bicinchoninic Acid Protein Assay | Report results | 0.8 mg/mL |
| Functional Activity Western blot (Figure 1) ^{1,2} Cotton rat IgG and BEI Resources NR-13666 Cotton rat IgM and BEI Resources NR-13666 ELISA (Figure 2) ^{1,2} Cotton rat IgG and BEI Resources NR-13666 Cotton rat IgM and BEI Resources NR-13666 Cotton rat IgG and monoclonal antibody to cotton rat IgM Cotton rat IgM and monoclonal antibody to cotton rat IgG FACS analysis (Figure 3) ³ Cotton rat spleen cells and BEI Resources NR-13666 | Reactive with light chain Reactive with light chain Reactive Reactive Not reactive Not reactive Antibody binding | Reactive with light chain Reactive with light chain Reactive Reactive Not reactive (not shown) Not reactive (not shown) Antibody binding |

¹Serum cotton rat IgG was purified by protein G affinity chromatography and is composed predominately of IgG1 [Coe, J. E. and G. A. Prince. "Definition of Cotton Rat Immunoglobulins: *Sigmodon* Species Differ in Expression of IgG Isotypes and Production of Respiratory Syncytial Virus Antibody." *Immunology* 88 (1996): 323-330. PubMed: 8774346].

²Alkaline phosphatase labeled monoclonal antibody to cotton rat light chain (SealyCRLC; BEI Resources NR-13666) was tested for binding to serum cotton rat IgG (prepared as described in footnote 1) and cotton rat IgM (isolated from a mannan binding protein column).

³BEI Resources NR-13666 was conjugated to phycoerythrin and used to stain cotton rat spleen cells.

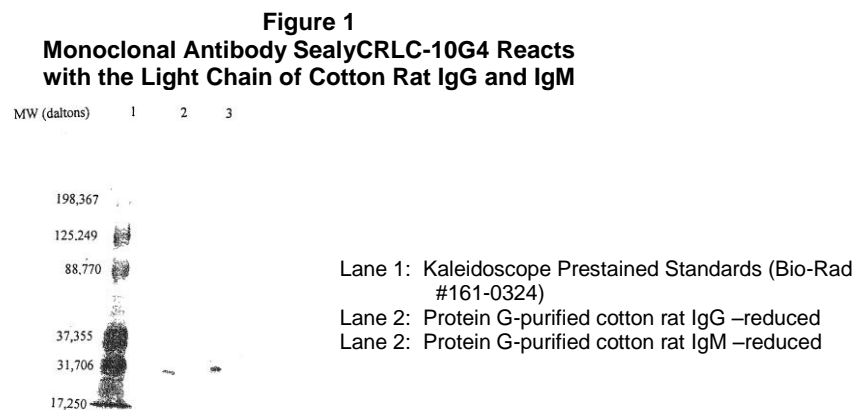


Figure 2

SealyCRLC-10G4 binds cotton rat IgG and IgM

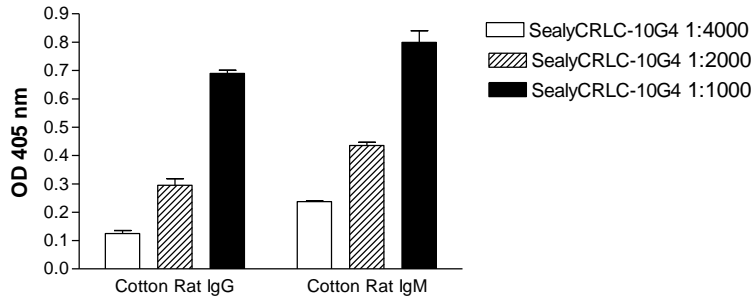
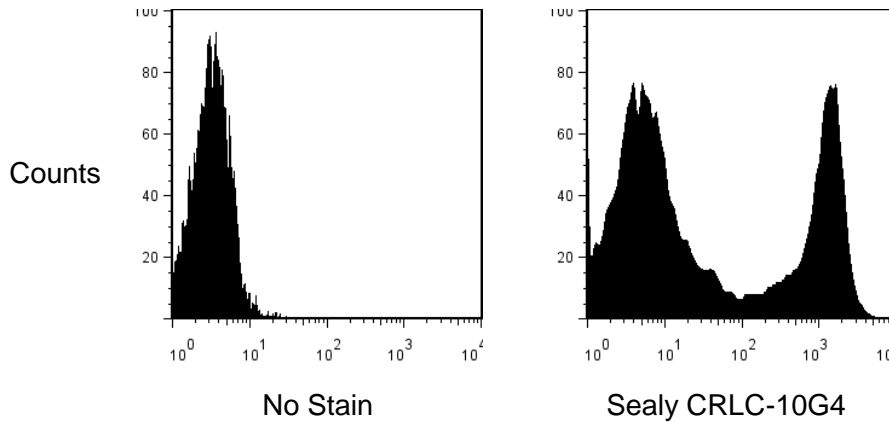


Figure 3



Legend: The anti-cotton rat light chain antibody Sealy CRLC-10G4 was conjugated to phycoerythrin and used to stain cotton rat spleen cells. FACS histograms before (left) and after (right) staining are shown.

Date: 28 JUN 2010

Signature: Signature on File

Title: Technical Manager, BEI Authentication or designee

ATCC®, on behalf of BEI Resources, hereby represents and warrants that the material provided under this certificate has been subjected by the contractor to the tests and procedures specified and that the results described, along with any other data provided in this certificate, are true and accurate to the best of ATCC®'s knowledge.

ATCC® is a trademark of the American Type Culture Collection. You are authorized to use this product for research use only. It is not intended for human use.

