

***Escherichia coli*, Strain CoGen002096**

Catalog No. NR-4356

Product Description: *Escherichia coli* (*E. coli*), strain CoGen002096 is an isolate from Illinois that was obtained during the California spinach outbreak.

Lot¹: 58580348

Manufacturing Date: 03APR2009

TEST	SPECIFICATIONS	RESULTS
Phenotypic Analysis Cellular morphology Colony morphology ² Biochemical Characterization β-galactosidase Arginine dihydrolysase ³ Lysine decarboxylase Ornithine decarboxylase Citrate utilization ³ H ₂ S production ³ Urease Tryptophan deaminase ³ Indole production Acetoin production (Voges Proskauer) ³ Gelatinase ³ Glycosidic Oxidation/Fermentation Glucose ⁴ Mannitol Inositol ³ Sorbitol Rhamnose Saccharose Melibiose Amygdalin Arabinose	Gram-negative rods Report results Report results Negative Report results Report results Negative Negative Report results Negative Report results Negative Negative Report results Positive Report results Report results Report results Report results Report results Report results Report results Report results	Gram-negative rods Circular, low convex, entire, opaque, and cream (Figure 1) Positive Negative Positive Positive Negative Negative Negative Negative Positive Negative Negative Positive Positive Positive Positive Positive Negative Positive
Genotypic Analysis Sequencing of 16S ribosomal RNA gene (~ 1400 bp)	Consistent with <i>E. coli</i>	Consistent with <i>E. coli</i> ⁵
PCR Assay of Extracted DNA 16S ribosomal RNA gene	~ 1500 bp amplicon	~ 1500 bp amplicon
Viability (post-freeze)²	Growth	Growth

¹NR-4356 was produced by inoculation of the deposited material into Tryptic Soy Broth and grown 24 hours at 37°C and aerobic atmosphere. Broth inoculum was added to Kolles which were grown 24 hours at 37°C and aerobic atmosphere to produce this lot.

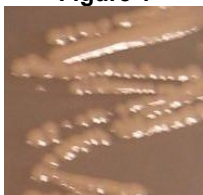
²24 hours at 37°C and aerobic atmosphere on Tryptic Soy Agar

³Based on the API® 20E Identification Table > 99% of *E. coli* have a negative reaction

⁴Based on the API® 20E Identification Table > 99% of *E. coli* have a positive reaction

⁵Also consistent with *Shigella* species

Figure 1



Date: 27 AUG 2008

Signature: Signature on File

Title: Technical Manager, BEI Authentication or designee

ATCC®, on behalf of BEI Resources, hereby represents and warrants that the material provided under this certificate has been subjected to the tests and procedures specified and that the results described, along with any other data provided in this certificate, are true and accurate to the best of ATCC®'s knowledge.

ATCC® is a trademark of the American Type Culture Collection.

You are authorized to use this product for research use only. It is not intended for human use.

