

Staphylococcus epidermidis, Strain SK135

Catalog No. HM-118

Product Description: *Staphylococcus epidermidis* (*S. epidermidis*), strain SK135 was isolated from normal skin of the right arm of a 57-year-old man.

Lot¹: 59265292

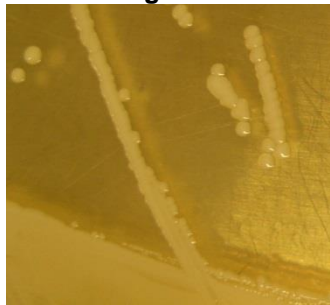
Manufacturing Date: 27MAY2010

TEST	SPECIFICATIONS	RESULTS
Phenotypic Analysis Cellular morphology Colony morphology ² Hemolysis on blood agar Biochemical Characterization Analytical profile index (API Staph [®]) Catalase	Gram-positive cocci Report results Negative Consistent with <i>S. epidermidis</i> Positive	Gram-positive cocci Circular, convex, entire, translucent and white (Figure 1) Negative Consistent with <i>S. epidermidis</i> Positive
Genotypic Analysis Sequencing of 16S ribosomal RNA gene (1480 base pairs) RiboPrinter [®] Microbial Characterization System	Consistent with <i>S. epidermidis</i> Consistent with <i>S. epidermidis</i>	Consistent with <i>S. epidermidis</i> Consistent with <i>S. epidermidis</i>
PCR Assay of Extracted DNA 16S ribosomal RNA gene	~ 1500 bp amplicon	~ 1500 bp amplicon
Viability (post-freeze)²	Growth	Growth

¹*S. epidermidis*, strain SK135 was deposited by Dr. Guillermo I. Perez-Perez, D.Sc., Associate Professor of Medicine, Departments of Medicine and Microbiology; School of Medicine, New York University, New York, New York. HM-118 was produced by inoculation of the deposited material into Brain Heart Infusion (BHI) Broth and grown 24 hours at 37°C. Broth inoculum was added to Kolles which were grown 24 hours at 37°C to produce this lot.

²24 hours at 37°C and aerobic atmosphere on BHI agar

Figure 1



Date: 30 SEP 2010

Signature: Signature on file

Title: Technical Manager, BEI Authentication or designee

ATCC[®], on behalf of BEI Resources, hereby represents and warrants that the material provided under this certificate has been subjected by ATCC[®] to the tests and procedures specified and that the results described, along with any other data provided in this certificate, are true and accurate to the best of ATCC[®]'s knowledge.

ATCC[®] is a trademark of the American Type Culture Collection.
 You are authorized to use this product for research use only. It is not intended for human use.

